

8 ch High-Voltage Source Driver

The FD62783AP/AF are comprised of eight source current Transistor Array.

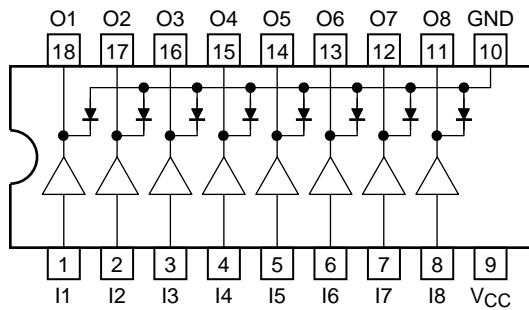
These drivers are specifically designed for fluorescent display applications.

Applications include relay, hammer and lamp drivers.

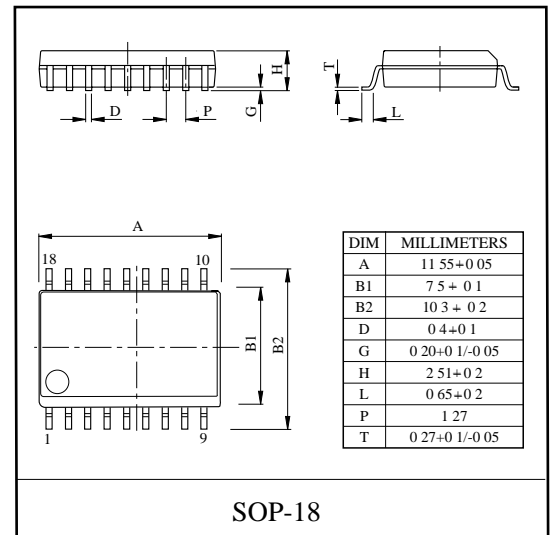
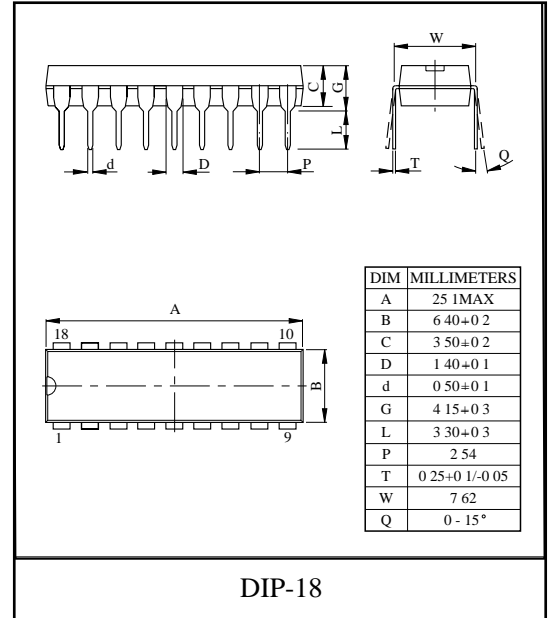
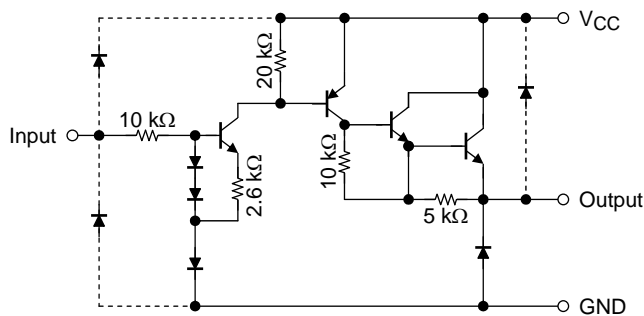
Features

- High output voltage: $V_{CC} = 50\text{ V (min)}$
- Output current (single output): $I_{OUT} = -500\text{ mA (max)}$
- Output clamp diodes
- Single supply voltage
- Input compatible with various types of logic
- Package type-AP: DIP-18 pin
- Package type-AF: SOP-18 pin
- Designation: TTL, 5V CMOS

Pin Assignment (top view)



Schematics (each driver)



Note: The input and output parasitic diodes cannot be used as clamp diodes.



Absolute Maximum Ratings (Ta = 25°C)

Characteristics	Symbol	Rating	Unit	
Supply voltage	V _{CC}	50	V	
Output current	I _{OUT}	-500	mA/ch	
Input voltage	V _{IN}	15	V	
Clamp diode reverse voltage	V _R	50	V	
Clamp diode forward current	I _F	500	mA	
Power dissipation	AP	P _D (Note)	1.47	W
	AF		0.96	
Operating temperature	T _{opr}	-40 to 85	C	
Storage temperature	T _{stg}	-55 to 150	C	

Note: Derated above 25 C in the proportion of 11.7 mW/ C (AP type), 7.7 mW/ C (AF type)

Operating Ranges (Ta = -40 to 85°C)

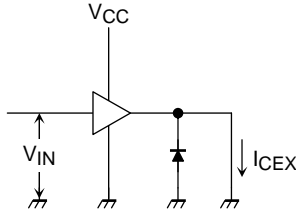
Characteristics	Symbol	Test Condition	Min	Typ.	Max	Unit	
Supply voltage	V _{CC}	-	-	-	50	V	
Output current	AF	I _{OUT} Ta = 85 C, Tj = 120 C, t _{pw} = 25 ms	Duty = 10% 8 circuits	-	-	-260	mA/ch
			Duty = 50% 8 circuits	-	-	-59	
			Duty = 10% 8 circuits	-	-	-180	
			Duty = 50% 8 circuits	-	-	-38	
Input voltage	V _{IN}	-	-	-	12	V	
Input voltage	Output ON	V _N (ON)	-	2.0	5.0	15	V
	Output OFF	V _{IN} (OFF)	-	0	-	0.8	
Clamp diode reverse voltage	V _R	-	-	-	50	V	
Clamp diode forward current	I _F	-	-	-	400	mA	
Power dissipation	AP	P _D	-	-	-	0.52	W
	AF		-	-	-	0.35	

Electrical Characteristics (Ta = 25°C)

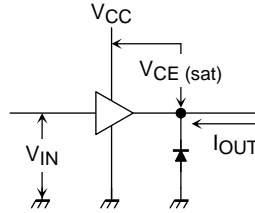
Characteristics	Symbol	Test Circuit	Test Condition	Min	Typ.	Max	Unit
Output leakage current	I _{CEX}	1	V _{CC} = V _{CC} max V _{IN} = 0.4 V Ta = 25 C	-	-	100	μA
Output saturation voltage	V _{CE} (sat)	2	V _{IN} = V _{IN} (ON), I _{OUT} = -350 mA	-	-	2.0	V
			V _{IN} = V _{IN} (ON), I _{OUT} = -225 mA	-	-	1.9	
			V _{IN} = V _{IN} (ON), I _{OUT} = -100 mA	-	-	1.8	
Input current	I _{IN} (ON)	3	V _{IN} = 2.4 V	-	36	52	μA
			V _{IN} = 3.85 V	-	180	260	
Input voltage	V _{IN} (ON)	4	V _{CE} = 2.0 V, I _{OUT} = -350 mA	-	-	2.0	V
	V _{IN} (OFF)		I _{OUT} = -500 μA	0.8	-	-	
Supply current	I _{CC} (ON)	3	V _{IN} = V _{IN} (ON), V _{CC} = 50 V	-	-	2.5	mA/ch
Clamp diode reverse current	I _R	5	V _R = 50 V	-	-	50	μA
Clamp diode forward voltage	V _F	6	I _F = 350 mA	-	-	2.0	V
Turn-ON delay	t _{ON}	7	V _{CC} = V _{CC} max R _L = 125 Ω C _L = 15 pF	-	0.15	-	μs
Turn-OFF delay	t _{OFF}	7	V _{CC} = V _{CC} max R _L = 125 Ω C _L = 15 pF	-	1.8	-	μs

Test Circuit

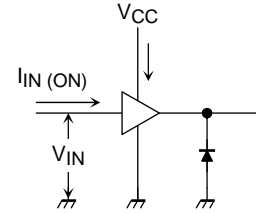
1. ICEX



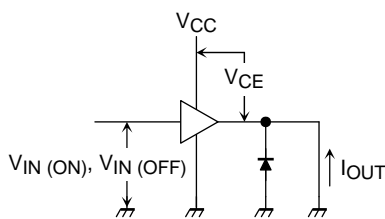
2. V_{CE (sat)}



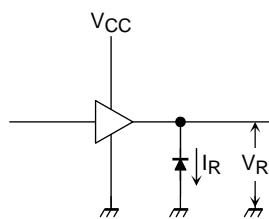
3. I_{IN (ON)}, I_{CC}



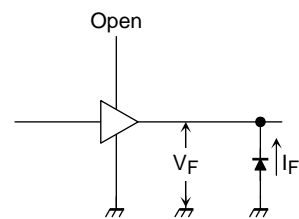
4. V_{IN (ON)}, V_{IN (OFF)}



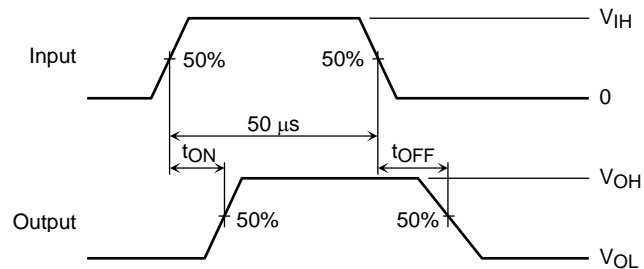
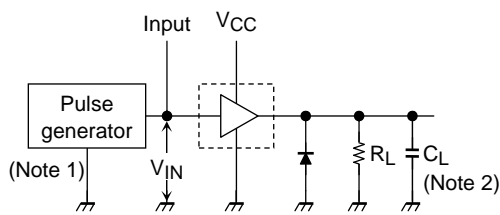
5. I_R



6. V_F



7. t_{ON}, t_{OFF}



Note 1: Pulse Width 50 μ s, Duty Cycle 10%
Output Impedance 50 Ω , $t_r \leq 5$ ns, $t_f \leq 10$ ns

Note 2: C_L includes probe and jig capacitance.

Precautions for Using

This IC does not integrate protection circuits such as overcurrent and overvoltage protectors.

Thus, if excess current or voltage is applied to the IC, the IC may be damaged. Please design the IC so that excess current or voltage will not be applied to the IC.

Utmost care is necessary in the design of the output line, VCC and GND line since IC may be destroyed due to short-circuit between outputs, air contamination fault, or fault by improper grounding.

