

150V N-Channel MOSFETs

General Description

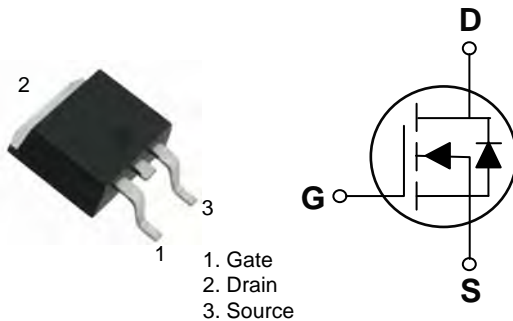
These N-Channel enhancement mode power field effect transistors are using trench DMOS technology. This advanced technology has been especially tailored to minimize on-state resistance, provide superior switching performance, and withstand high energy pulse in the avalanche and commutation mode. These devices are well suited for high efficiency fast switching applications.

BVDSS	RDSON	ID
150V	65mΩ	25A

Features

- 150V,25A, RDS(ON) 65mΩ @VGS = 10V
- VGS Guarantee ±25V
- Improved dv/dt capability
- Fast switching
- Green Device Available

TO-252 Pin Configuration



Applications

- Notebook
- Load Switch
- LED applications
- Li battery pack application

Absolute Maximum Ratings (Tc=25 °C unless otherwise noted)

Symbol	Parameter	Rating	Units
V _{DS}	Drain-Source Voltage	150	V
V _{GS}	Gate-Source Voltage	± 25	V
I _D	Drain Current – Continuous (T _C =25 °C)	25	A
	Drain Current – Continuous (T _C =100 °C)	16	A
I _{DM}	Drain Current – Pulsed ¹	100	A
EAS	Single Pulse Avalanche Energy ²	242	mJ
IAS	Single Pulse Avalanche Current ²	22	A
P _D	Power Dissipation (T _C =25 °C)	102	W
	Power Dissipation – Derate above 25 °C	0.82	W/°C
T _{STG}	Storage Temperature Range	-55 to 150	°C
T _J	Operating Junction Temperature Range	-55 to 150	°C

Thermal Characteristics

Symbol	Parameter	Typ.	Max.	Unit
R _{θJA}	Thermal Resistance Junction to ambient	---	62	°C/W
R _{θJC}	Thermal Resistance Junction to Case	---	1.22	°C/W



FTK30N15D

150V N-Channel MOSFETs

Electrical Characteristics ($T_J=25^\circ\text{C}$, unless otherwise noted)

Off Characteristics

Symbol	Parameter	Conditions	Min.	Typ.	Max.	Unit
BV_{DSS}	Drain-Source Breakdown Voltage	$V_{GS}=0V, I_D=250\mu A$	150	---	---	V
$\Delta BV_{DSS}/\Delta T_J$	BV_{DSS} Temperature Coefficient	Reference to 25°C , $I_D=1\text{mA}$	---	0.08	---	V/ $^\circ\text{C}$
I_{DSS}	Drain-Source Leakage Current	$V_{DS}=120V, V_{GS}=0V, T_J=25^\circ\text{C}$	---	---	1	μA
		$V_{DS}=96V, V_{GS}=0V, T_J=125^\circ\text{C}$	---	---	30	μA
I_{GSS}	Gate-Source Leakage Current	$V_{GS}=\pm 25V, V_{DS}=0V$	---	---	± 100	nA

On Characteristics

$R_{DS(ON)}$	Static Drain-Source On-Resistance	$V_{GS}=10V, I_D=5A$	---	52	65	m Ω
		$V_{GS}=6V, I_D=3A$	---	65	90	m Ω
$V_{GS(th)}$	Gate Threshold Voltage	$V_{GS}=V_{DS}, I_D=250\mu A$	2	3	4	V
$\Delta V_{GS(th)}$	$V_{GS(th)}$ Temperature Coefficient		---	-2.5	---	mV/ $^\circ\text{C}$

Dynamic and switching Characteristics

Q_g	Total Gate Charge ^{2,3}	$V_{DS}=75V, V_{GS}=10V, I_D=4A$	---	30	45	nC
Q_{gs}	Gate-Source Charge ^{2,3}		---	8.7	14	
Q_{gd}	Gate-Drain Charge ^{2,3}		---	8	15	
$T_{d(on)}$	Turn-On Delay Time ^{2,3}	$V_{DD}=30V, V_{GS}=10V, R_G=6\Omega$ $I_D=1A$	---	14.5	28	ns
T_r	Rise Time ^{2,3}		---	19.2	18	
$T_{d(off)}$	Turn-Off Delay Time ^{2,3}		---	33.6	60	
T_f	Fall Time ^{2,3}		---	22.8	25	
C_{iss}	Input Capacitance	$V_{DS}=30V, V_{GS}=0V, F=1\text{MHz}$	---	1790	3000	pF
C_{oss}	Output Capacitance		---	160	300	
C_{rss}	Reverse Transfer Capacitance		---	82	160	
R_g	Gate Resistance	$V_{GS}=0V, V_{DS}=0V, F=1\text{MHz}$		1.4	2.8	Ω

Drain-Source Diode Characteristics and Maximum Ratings

Symbol	Parameter	Conditions	Min.	Typ.	Max.	Unit
I_S	Continuous Source Current	$V_G=V_D=0V$, Force Current	---	---	25	A
I_{SM}	Pulsed Source Current		---	---	50	A
V_{SD}	Diode Forward Voltage	$V_{GS}=0V, I_S=1A, T_J=25^\circ\text{C}$	---	---	1.2	V
t_{rr}	Reverse Recovery Time ²	$V_{GS}=0V, I_S=1A, di/dt=100A/\mu s$ $T_J=25^\circ\text{C}$	---	---	---	ns
Q_{rr}	Reverse Recovery Charge ²		---	---	---	nC

Note :

1. Repetitive Rating : Pulsed width limited by maximum junction temperature.
2. The data tested by pulsed , pulse width $\leq 300\mu s$, duty cycle $\leq 2\%$.
3. Essentially independent of operating temperature.
4. $V_{DD}=50V, V_{GS}=10V, L=1\text{mH}, I_{AS}=22A, R_G=25\Omega$,Starting $T_J=25^\circ\text{C}$.

150V N-Channel MOSFETs

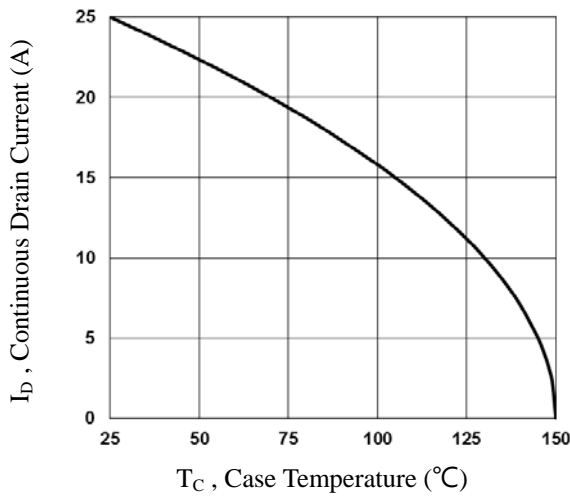


Fig.1 Continuous Drain Current vs. T_C

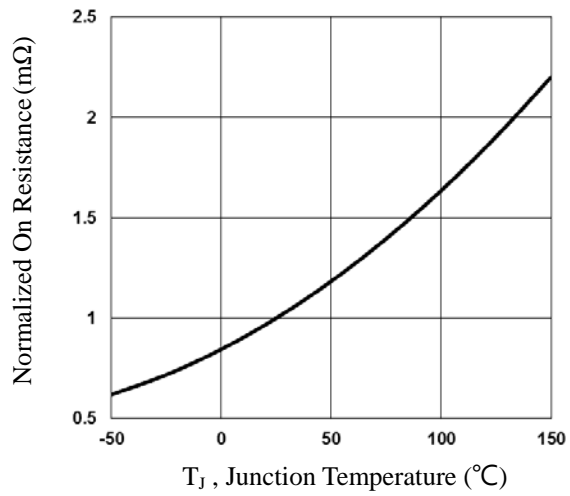


Fig.2 Normalized $R_{DS(on)}$ vs. T_J

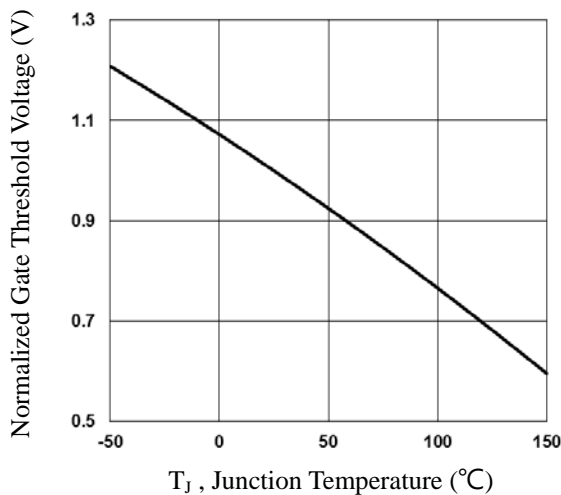


Fig.3 Normalized V_{th} vs. T_J

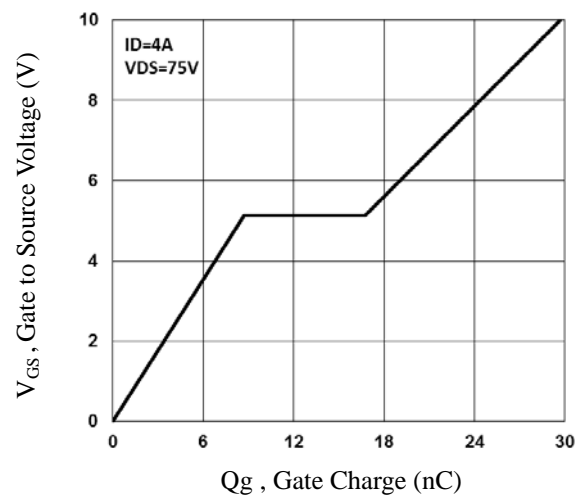


Fig.4 Gate Charge Characteristics

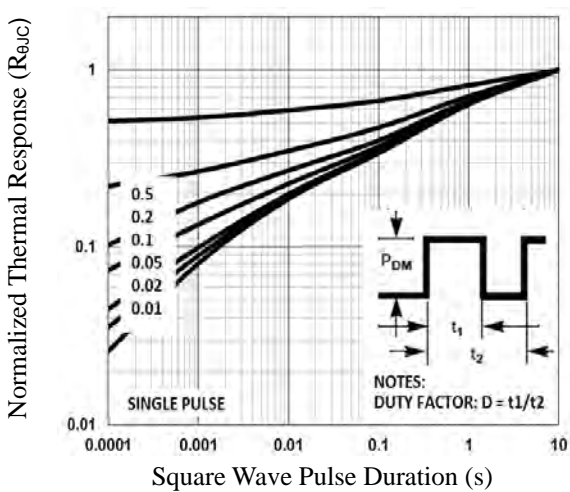


Fig.5 Normalized Transient Impedance

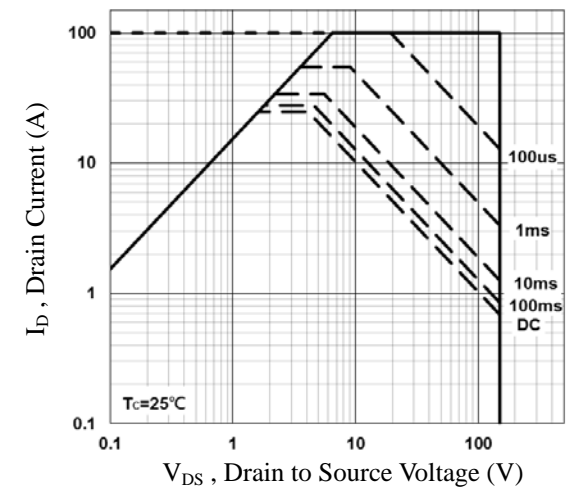


Fig.6 Maximum Safe Operation Area



150V N-Channel MOSFETs

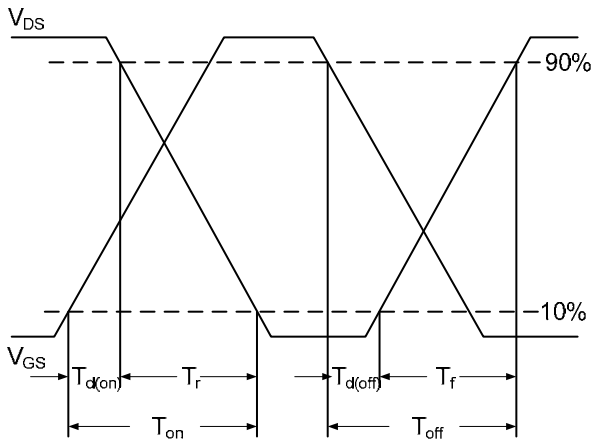


Fig.7 Switching Time Waveform

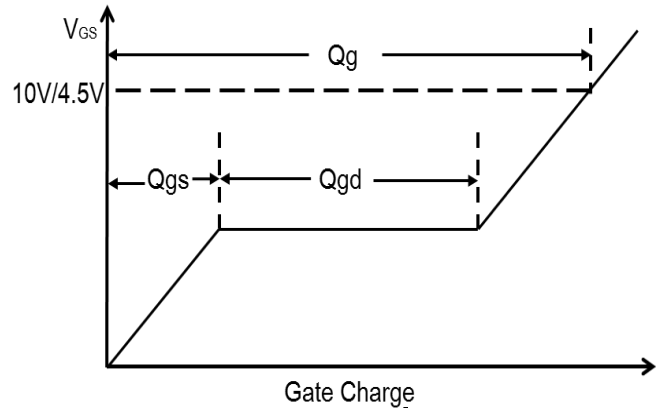
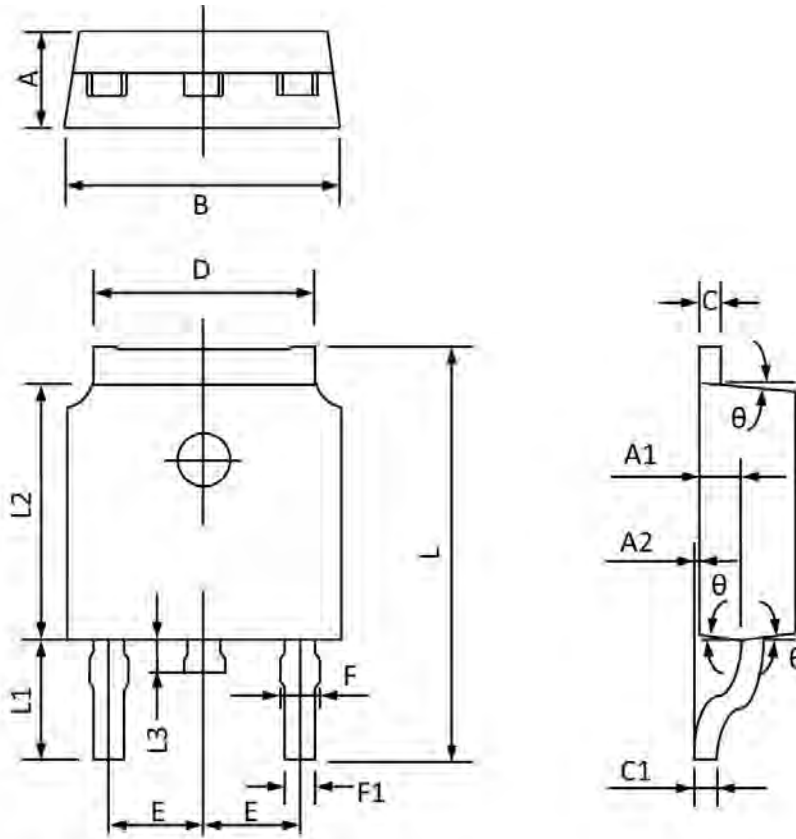


Fig.8 Gate Charge Waveform

150V N-Channel MOSFETs

TO-252 PACKAGE INFORMATION



Symbol	Dimensions In Millimeters		Dimensions In Inches	
	Min	Max	Min	Max
A	2.20	2.40	0.087	0.094
A1	0.91	1.11	0.036	0.044
A2	0.00	0.15	0.000	0.006
B	6.50	6.70	0.256	0.264
C	0.46	0.580	0.018	0.230
C1	0.46	0.580	0.018	0.030
D	5.10	5.46	0.201	0.215
E	2.186	2.386	0.086	0.094
F	0.74	0.94	0.029	0.037
F1	0.660	0.860	0.026	0.034
L	9.80	10.40	0.386	0.409
L1	2.9REF		0.114REF	
L2	6.00	6.20	0.236	0.244
L3	0.60	1.00	0.024	0.039
θ	3°	9°	3°	9°