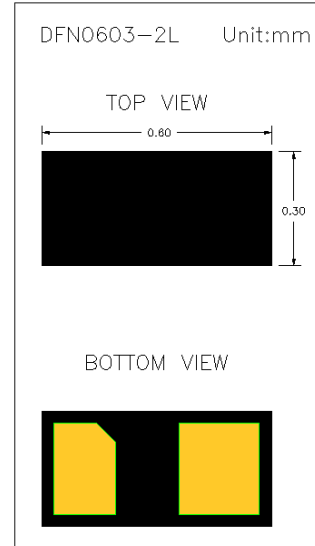
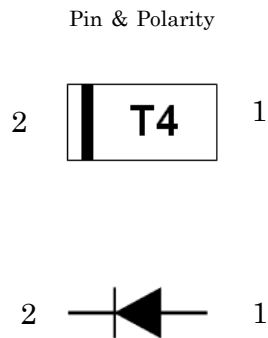


Switching Diode

- ◇ Fast switching devices
- ◇ Low Reverse Leakage Current
- ◇ ROHS Compliant
- ◇ UL-94 V-0 / Green EMC
- ◇ Matte Tin Lead finish (Pb-Free)

Device Marking Code	
1N4148D3	T4



Maximum Ratings (Ta = 25°C)

Symbol	Parameter	Value	Units
V_{RSM}	Non- Repetitive Peak Reverse Voltage	100	V
V_{RRM}	Peak Repetitive Reverse Voltage	75	V
V_{RWM}	Working Peak Reverse Voltage		
V_R	DC Blocking Voltage		
I_{FRM}	Repetitive Peak Forward Current	300	mA
I_O	Average Forward Current	100	mA
I_{FSM}	Non- Repetitive Peak Forward Current	2	A
P_D	Power Dissipation	100	mW
T_J	Junction Temperature	150	°C
T_{STG}	Storage Temperature	-55 to +150	°C

*1: Pulse width = 1μs



1N4148D3

Electrical Characteristics (Ta = 25°C unless otherwise noted)

Symbol	Parameter	Conditions	Min	Typ	Max	Units
V_R	Reverse Voltage	$I_R=100\mu A$	75			V
V_F	Forward Voltage	$I_F=5mA$ $I_F=10mA$ $I_F=100mA$ $I_F=150mA$	0.62		0.72 0.855 1.0 1.25	V
I_R	Reverse Leakage Current	$V_R=80V$ $V_R=20V$			100 25	nA
C	Capacitance	$V_R = 0.5V, f = 1MHz$			3	pF
T_{RR}	Reverse Recovery Time	$I_F = I_R=10mA$ $I_{RR}= 1mA, R_L = 100\Omega$			4	ns

Characteristics Curves

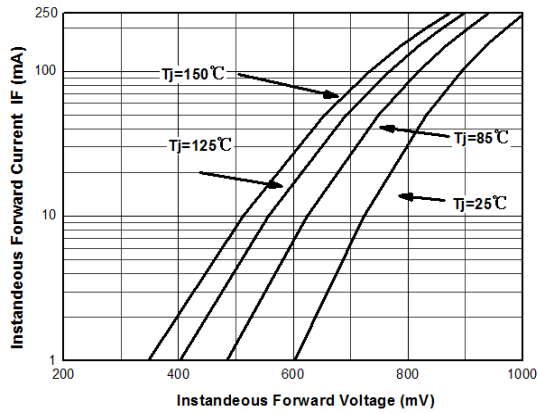


Fig.1 Forward current(IF) vs Forward voltage(VF)

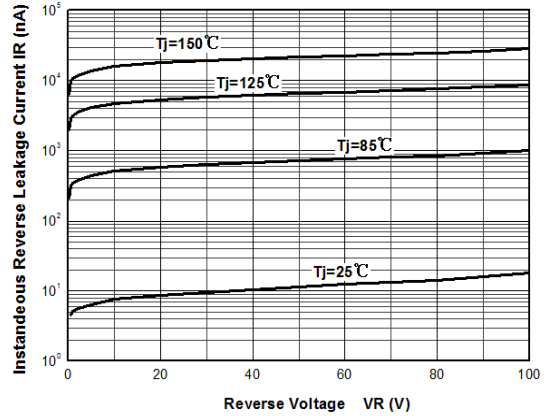


Fig.2 Reverse current(IR) vs Reverse voltage(VR)

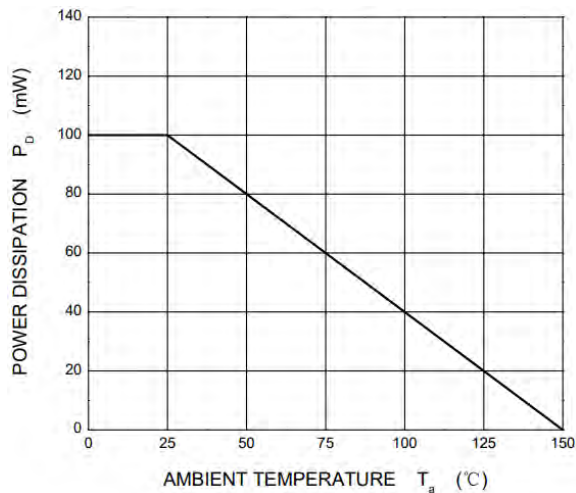


Fig.3 Power Derating Curve

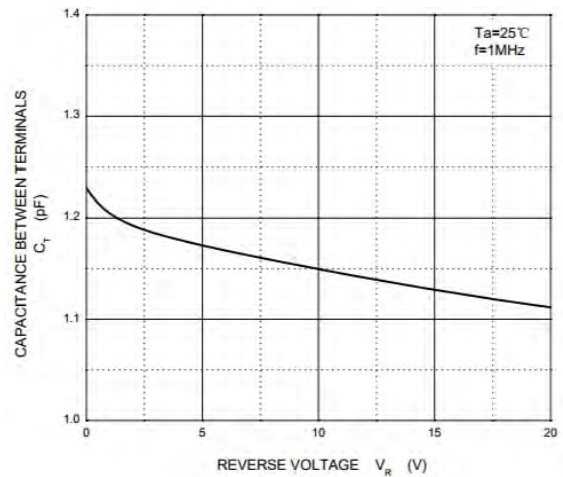


Fig.4 Capacitance vs Reverse voltage(VR)

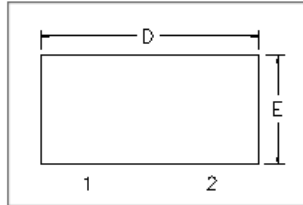
Ordering Information

Device	Package	Shipping	Tape wide	Emboss pitch	Tape specification	Notes
1N4148D3	DFN0603-2L	Tape & Reel	8mm	4mm	Conductive	
		15000pcs /7" Reel				

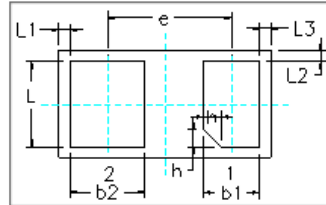
Package Dimensions

Package outline : DFN0603-2L-1

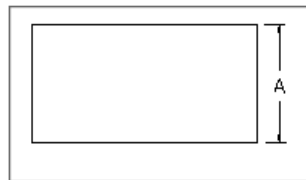
Top view



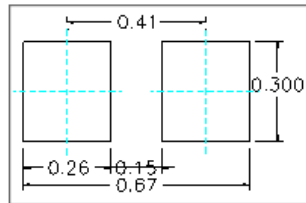
Bottom view



Side view



Soldering Pattern



SYMBOL	MILLIMETER		
	MIN	NOM	MAX
A	0.28	0.30	0.32
b1	0.13	0.18	0.23
b2	0.14	0.19	0.24
D	0.55	0.60	0.65
e	0.350BSC		
L1	0.030BSC		
L2	0.025BSC		
L3	0.035BSC		
E	0.25	0.30	0.35
L	0.20	0.25	0.30
h	0.00	0.05	0.10

Notice:

1. Lead no need to do plating
2. Other Tolerance: ± 0.05
3. Dimensions are exclusive of Burrs, Mold Flash and Tie Bar extrusions
4. Unit: mm