

## Dual Schottky Barrier Rectifiers

### Reverse Voltage 100 Volts , Forward Current 30A

#### FEATURES

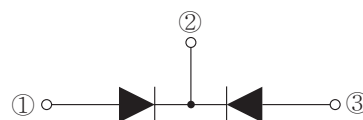
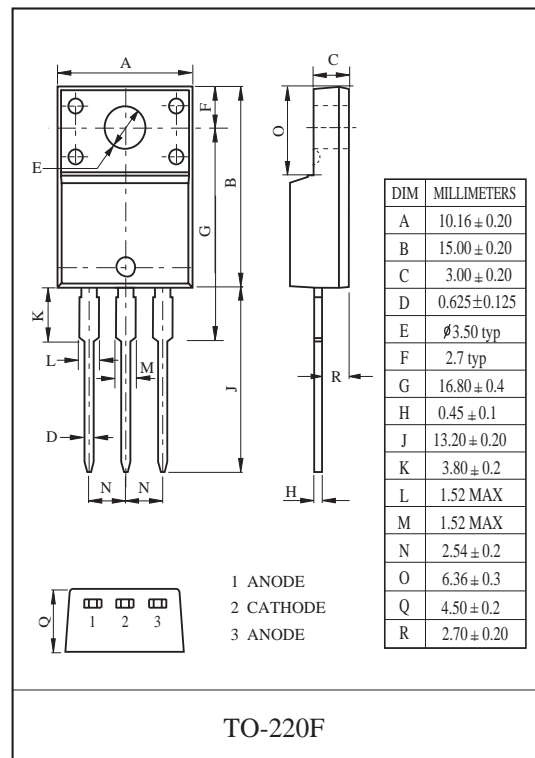
- Average Output Rectified Current  
:  $I_O = 30A$ .
- Repetitive Peak Reverse Voltage  
:  $V_{RRM} = 100V$ .
- Low Forward Voltage.
- Low Reverse Current.

#### APPLICATIONS

- Switching Mode Power Supply
- Converter & Chopper

#### MAXIMUM RATING (Ta=25°C unless otherwise noted)

CHARACTERISTIC	SYMBOL	RATING	UNIT
Repetitive Peak Reverse Voltage	$V_{RRM}$	100	V
Maximum Average Forward Rectified Current	$I_{F(AV)}$	30 15	A
Peak One Cycle Surge Forward Current (Non-Repetitive 60Hz)	$I_{FSM}$	200	A
Junction Temperature	$T_j$	150	°C
Storage Temperature Range	$T_{stg}$	-40 ~ 150	°C



#### ELECTRICAL CHARACTERISTICS (Ta=25°C unless otherwise noted)

CHARACTERISTIC	SYMBOL	TEST CONDITION	MIN.	TYP.	MAX.	UNIT
Reverse Breakdown Voltage	$V_{(BR)}$	$I_R = 0.1mA$	100	113	-	V
Peak Forward Voltage	$V_F$	$I_F = 1A$	-	0.38	-	V
		$I_F = 3A$	-	0.45	-	
		$I_F = 5A$	-	0.51	-	
		$I_F = 12.5A$	-	0.67	0.73	
		$I_F = 15A$	-	0.71	0.77	
Repetitive Peak Reverse Current	$I_{RRM}$	$V_{RRM} = 100V$	-	14	50	uA
Thermal Resistance	$R_{th(j-c)}$	Juction to Case	-	-	3.0	°C/W



# TMBRF30100CT

## RATINGS AND CHARACTERISTIC CURVES

