

## 30V N-Channel MOSFETs

### General Description

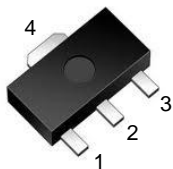
These N-Channel enhancement mode power field effect transistors are using trench DMOS technology. This advanced technology has been especially tailored to minimize on-state resistance, provide superior switching performance, and withstand high energy pulse in the avalanche and commutation mode. These devices are well suited for high efficiency fast switching applications.

BVDSS	RDSON	ID
30V	24mΩ	7.5A

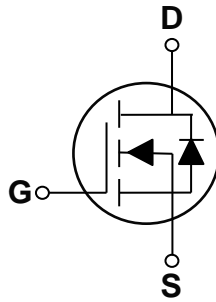
### Features

- 30V,7.5A,  $R_{DS(ON)} = 24m\Omega$  @  $V_{GS} = 10V$
- Improved  $dv/dt$  capability
- Fast switching
- 100% EAS Guaranteed
- Green Device Available

### SOT-89 Pin Configuration



1. Gate
2. Drain
3. Source
4. Drain



### Applications

- MB / VGA / Vcore
- Load Switch
- Hand-Held Instrument

### Absolute Maximum Ratings ( $T_C=25^\circ\text{C}$ unless otherwise noted)

Symbol	Parameter	Rating	Units
$V_{DS}$	Drain-Source Voltage	30	V
$V_{GS}$	Gate-Source Voltage	$\pm 20$	V
$I_D$	Drain Current – Continuous ( $T_C=25^\circ\text{C}$ )	7.5	A
	Drain Current – Continuous ( $T_C=100^\circ\text{C}$ )	4.74	A
$I_{DM}$	Drain Current – Pulsed <sup>1</sup>	30	A
EAS	Single Pulse Avalanche Energy <sup>2</sup>	32	mJ
IAS	Single Pulse Avalanched Current <sup>2</sup>	8	A
$P_D$	Power Dissipation ( $T_C=25^\circ\text{C}$ )	4.1	W
	Power Dissipation – Derate above $25^\circ\text{C}$	0.033	W/ $^\circ\text{C}$
$T_{STG}$	Storage Temperature Range	-55 to 150	$^\circ\text{C}$
$T_J$	Operating Junction Temperature Range	-55 to 150	$^\circ\text{C}$

### Thermal Characteristics

Symbol	Parameter	Typ.	Max.	Unit
$R_{\theta JA}$	Thermal Resistance Junction to ambient	---	80	$^\circ\text{C}/\text{W}$



# FTK3912F

## 30V N-Channel MOSFETs

Electrical Characteristics ( $T_J=25^\circ\text{C}$ , unless otherwise noted)

### Off Characteristics

Symbol	Parameter	Conditions	Min.	Typ.	Max.	Unit
$BV_{DSS}$	Drain-Source Breakdown Voltage	$V_{GS}=0V, I_D=250\mu A$	30	---	---	V
$\Delta BV_{DSS}/\Delta T_J$	$BV_{DSS}$ Temperature Coefficient	Reference to $25^\circ\text{C}$ , $I_D=1\text{mA}$	---	0.04	---	$V/^\circ\text{C}$
$I_{DSS}$	Drain-Source Leakage Current	$V_{DS}=30V, V_{GS}=0V, T_J=25^\circ\text{C}$	---	---	1	$\mu A$
		$V_{DS}=24V, V_{GS}=0V, T_J=125^\circ\text{C}$	---	---	10	$\mu A$
$I_{GSS}$	Gate-Source Leakage Current	$V_{GS}=\pm 20V, V_{DS}=0V$	---	---	$\pm 100$	nA

### On Characteristics

$R_{DS(ON)}$	Static Drain-Source On-Resistance <sup>3</sup>	$V_{GS}=10V, I_D=6A$	---	19	24	m $\Omega$
		$V_{GS}=4.5V, I_D=4A$	---	25	34	m $\Omega$
$V_{GS(th)}$	Gate Threshold Voltage	$V_{GS}=V_{DS}, I_D=250\mu A$	1.2	1.6	2.2	V
$\Delta V_{GS(th)}$	$V_{GS(th)}$ Temperature Coefficient		---	-4	---	$\text{mV}/^\circ\text{C}$
$g_{fs}$	Forward Transconductance	$V_{DS}=10V, I_D=4A$	---	6.5	---	S

### Dynamic and switching Characteristics

$Q_g$	Total Gate Charge <sup>3, 4</sup>	$V_{DS}=15V, V_{GS}=4.5V, I_D=6A$	---	4.1	8	nC
$Q_{gs}$	Gate-Source Charge <sup>3, 4</sup>		---	1	2	
$Q_{gd}$	Gate-Drain Charge <sup>3, 4</sup>		---	2.1	4	
$T_{d(on)}$	Turn-On Delay Time <sup>3, 4</sup>	$V_{DD}=15V, V_{GS}=10V, R_G=6\Omega$ $I_D=1A$	---	2.8	5	ns
$T_r$	Rise Time <sup>3, 4</sup>		---	7.2	14	
$T_{d(off)}$	Turn-Off Delay Time <sup>3, 4</sup>		---	15.8	30	
$T_f$	Fall Time <sup>3, 4</sup>		---	4.6	9	
$C_{iss}$	Input Capacitance	$V_{DS}=25V, V_{GS}=0V, F=1\text{MHz}$	---	345	500	pF
$C_{oss}$	Output Capacitance		---	55	80	
$C_{riss}$	Reverse Transfer Capacitance		---	32	45	
$R_g$	Gate resistance	$V_{GS}=0V, V_{DS}=0V, F=1\text{MHz}$	---	3.2	6.4	$\Omega$

### Drain-Source Diode Characteristics and Maximum Ratings

Symbol	Parameter	Conditions	Min.	Typ.	Max.	Unit
$I_S$	Continuous Source Current	$V_G=V_D=0V$ , Force Current	---	---	7.5	A
$I_{SM}$	Pulsed Source Current <sup>3</sup>		---	---	15	A
$V_{SD}$	Diode Forward Voltage <sup>3</sup>	$V_{GS}=0V, I_S=1A, T_J=25^\circ\text{C}$	---	---	1	V

Note :

1. Repetitive Rating : Pulsed width limited by maximum junction temperature.
2.  $V_{DD}=25V, V_{GS}=10V, L=1\text{mH}, I_{AS}=8A, R_G=25\Omega$ , Starting  $T_J=25^\circ\text{C}$ .
3. The data tested by pulsed, pulse width  $\leq 300\mu s$ , duty cycle  $\leq 2\%$ .
4. Essentially independent of operating temperature.



# FTK3912F

## 30V N-Channel MOSFETs

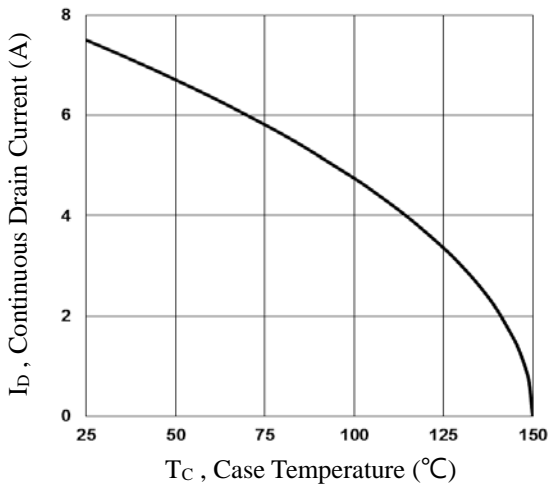


Fig.1 Continuous Drain Current vs.  $T_c$

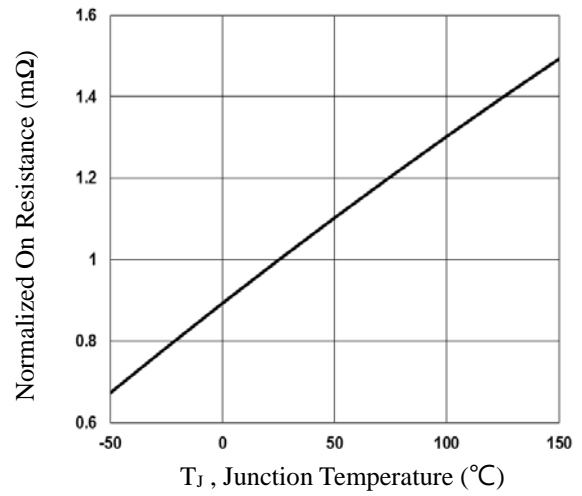


Fig.2 Normalized  $R_{DS(on)}$  vs.  $T_j$

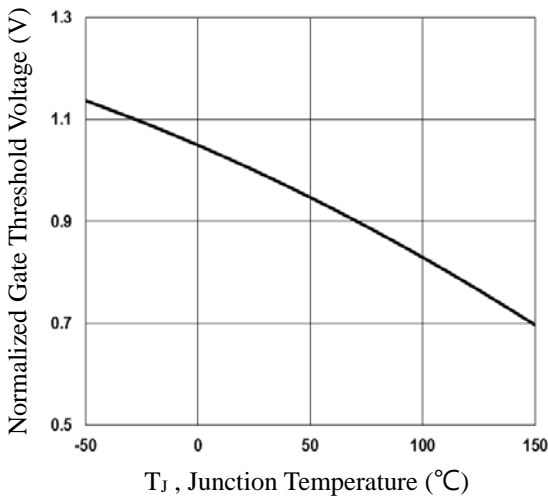


Fig.3 Normalized  $V_{th}$  vs.  $T_j$

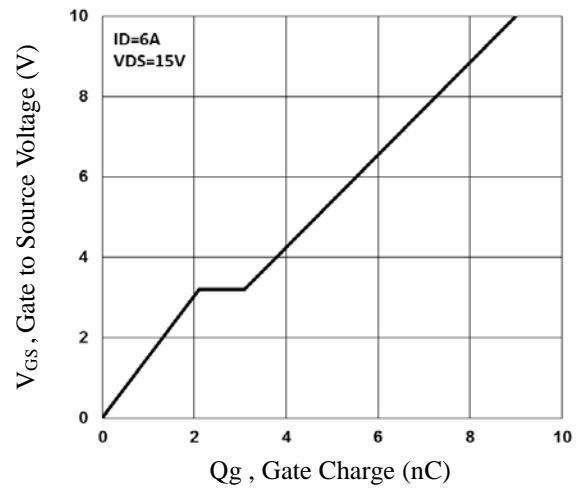


Fig.4 Gate Charge Waveform

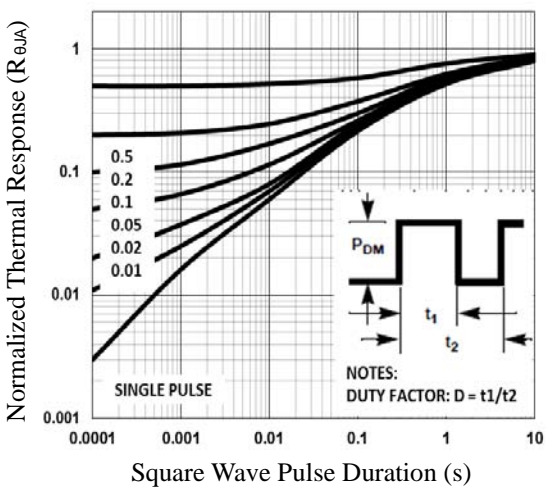


Fig.5 Normalized Transient Response

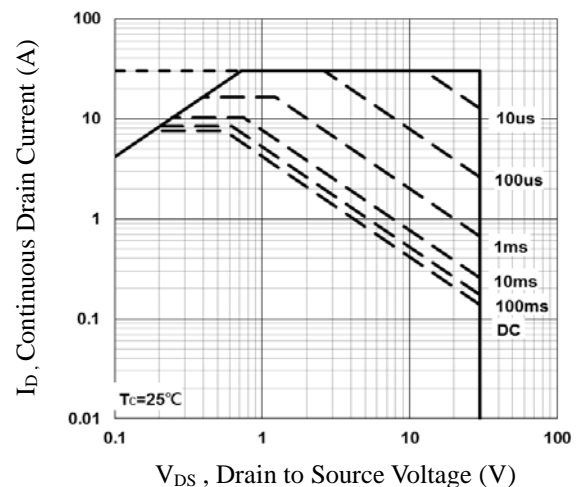


Fig.6 Maximum Safe Operation Area

## 30V N-Channel MOSFETs

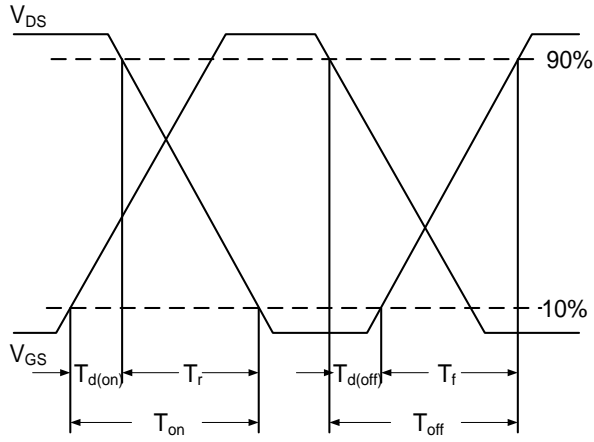


Fig.7 Switching Time Waveform

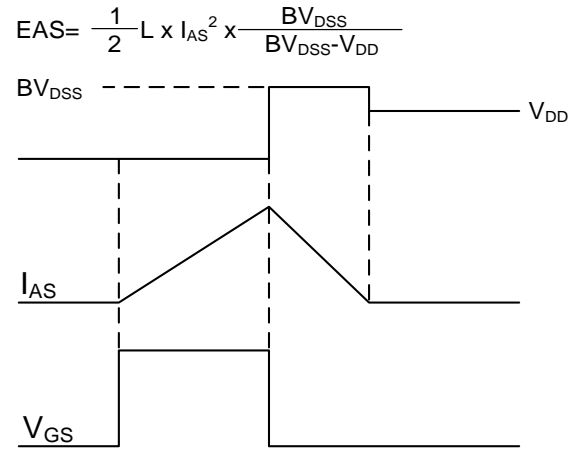
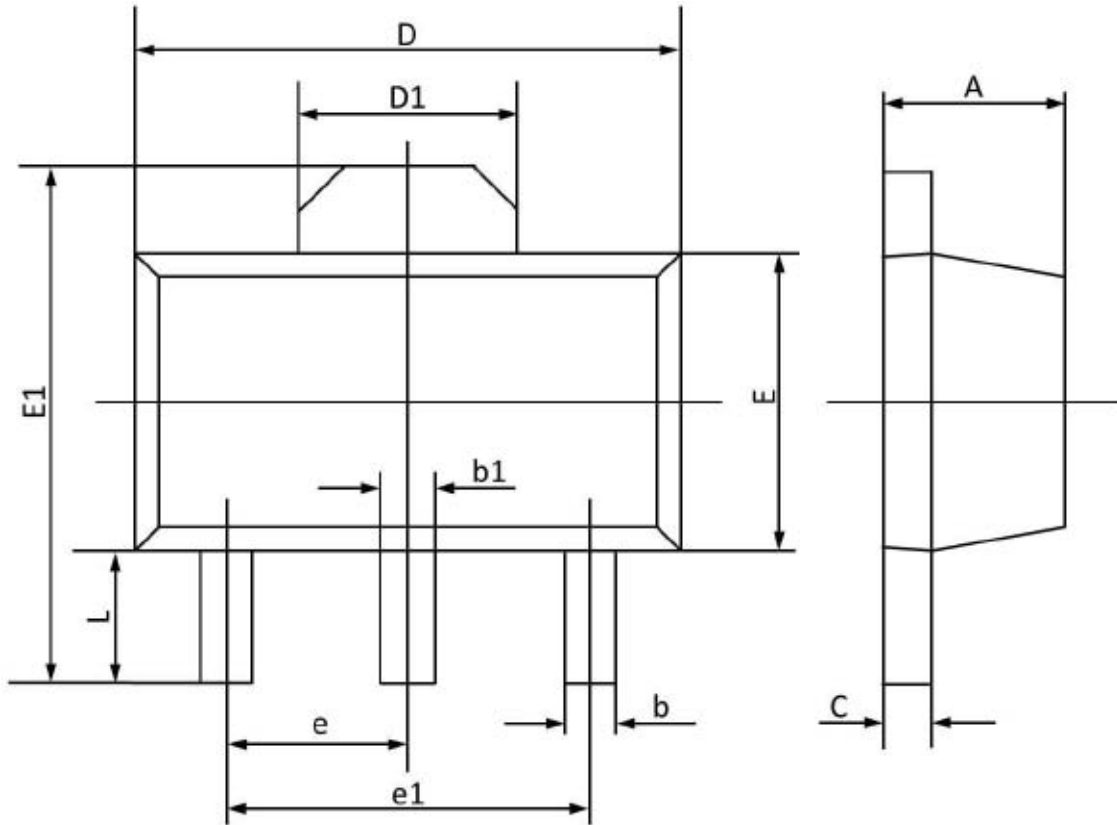


Fig.8 EAS Waveform

## 30V N-Channel MOSFETs

### SOT-89 PACKAGE INFORMATION



Symbol	Dimensions In Millimeters		Dimensions In Inches	
	Min	Max	Min	Max
A	1.400	1.600	0.055	0.063
b	0.320	0.520	0.013	0.020
b1	0.400	0.580	0.016	0.023
c	0.350	0.440	0.014	0.017
D	4.400	4.600	0.173	0.181
D1	1.550 REF		0.061 REF	
E	2.300	2.600	0.091	0.102
E1	3.940	4.250	0.155	0.167
e	1.500 TYP.		0.060 TYP.	
e1	3.000 TYP		0.118 TYP	
L	0.900	1.200	0.035	0.047