

## 100V N-Channel MOSFETs

### General Description

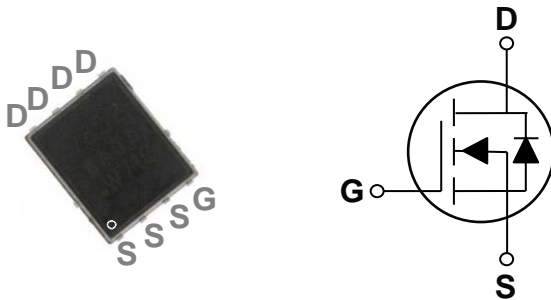
These N-Channel enhancement mode power field effect transistors are using trench DMOS technology. This advanced technology has been especially tailored to minimize on-state resistance, provide superior switching performance, and withstand high energy pulse in the avalanche and commutation mode. These devices are well suited for high efficiency fast switching applications.

BVDSS	RDSON	ID
100V	25mΩ	30A

### Features

- 100V,30A,  $R_{DS(ON)} = 25m\Omega$  @  $V_{GS} = 10V$
- Improved  $dv/dt$  capability
- Fast switching
- 100% EAS Guaranteed
- Green Device Available

### PPAK5X6 Pin Configuration



### Applications

- Motor Drive
- Power Tools
- LED Lighting

### Absolute Maximum Ratings ( $T_C=25^\circ C$ unless otherwise noted)

Symbol	Parameter	Rating	Units
$V_{DS}$	Drain-Source Voltage	100	V
$V_{GS}$	Gate-Source Voltage	+20 / -12	V
$I_D$	Drain Current – Continuous ( $T_C=25^\circ C$ )	30	A
	Drain Current – Continuous ( $T_C=100^\circ C$ )	19	A
$I_{DM}$	Drain Current – Pulsed <sup>1</sup>	120	A
EAS	Single Pulse Avalanche Energy <sup>2</sup>	76	mJ
IAS	Single Pulse Avalanche Current <sup>2</sup>	39	A
$P_D$	Power Dissipation ( $T_C=25^\circ C$ )	68	W
	Power Dissipation – Derate above $25^\circ C$	0.55	W/ $^\circ C$
$T_{STG}$	Storage Temperature Range	-55 to 150	$^\circ C$
$T_J$	Operating Junction Temperature Range	-55 to 150	$^\circ C$

### Thermal Characteristics

Symbol	Parameter	Typ.	Max.	Unit
$R_{\theta JA}$	Thermal Resistance Junction to ambient	---	62	$^\circ C/W$
$R_{\theta JC}$	Thermal Resistance Junction to Case	---	1.83	$^\circ C/W$



# FTK0986DFN56

## 100V N-Channel MOSFETs

Electrical Characteristics ( $T_J=25^\circ\text{C}$ , unless otherwise noted)

### Off Characteristics

Symbol	Parameter	Conditions	Min.	Typ.	Max.	Unit
$BV_{DSS}$	Drain-Source Breakdown Voltage	$V_{GS}=0V, I_D=250\mu A$	100	---	---	V
$I_{DSS}$	Drain-Source Leakage Current	$V_{DS}=100V, V_{GS}=0V, T_J=25^\circ\text{C}$	---	---	1	$\mu A$
		$V_{DS}=80V, V_{GS}=0V, T_J=125^\circ\text{C}$	---	---	10	$\mu A$
$I_{GSS}$	Gate-Source Leakage Current	$V_{GS}=20V, V_{DS}=0V$	---	---	100	nA

### On Characteristics

$R_{DS(ON)}$	Static Drain-Source On-Resistance <sup>3</sup>	$V_{GS}=10V, I_D=14A$	---	21	25	m $\Omega$
		$V_{GS}=4.5V, I_D=10A$	---	28	36	m $\Omega$
$V_{GS(th)}$	Gate Threshold Voltage	$V_{GS}=V_{DS}, I_D=250\mu A$	1.0	1.5	2.5	V
gfs	Forward Transconductance	$V_{DS}=10V, I_D=3A$	---	9	---	S

### Dynamic and switching Characteristics

$Q_g$	Total Gate Charge <sup>3, 4</sup>	$V_{DS}=50V, V_{GS}=10V, I_D=10A$	---	9.8	18	nC
$Q_{gs}$	Gate-Source Charge <sup>3, 4</sup>		---	1.8	2.5	
$Q_{gd}$	Gate-Drain Charge <sup>3, 4</sup>		---	2.6	4	
$T_{d(on)}$	Turn-On Delay Time <sup>3, 4</sup>	$V_{DD}=50V, V_{GS}=10V, R_G=3.3\Omega$ $I_D=1A$	---	12.5	25	ns
$T_r$	Rise Time <sup>3, 4</sup>		---	11	22	
$T_{d(off)}$	Turn-Off Delay Time <sup>3, 4</sup>		---	32	64	
$T_f$	Fall Time <sup>3, 4</sup>		---	13	26	
$C_{iss}$	Input Capacitance	$V_{DS}=50V, V_{GS}=0V, F=1\text{MHz}$	---	615	1200	pF
$C_{oss}$	Output Capacitance		---	484	960	
$C_{rss}$	Reverse Transfer Capacitance		---	25	50	
Rg	Gate Resistance	$V_{GS}=0V, V_{DS}=0V, F=1\text{MHz}$	---	0.8	---	$\Omega$

### Drain-Source Diode Characteristics and Maximum Ratings

Symbol	Parameter	Conditions	Min.	Typ.	Max.	Unit
$I_S$	Continuous Source Current	$V_G=V_D=0V$ , Force Current	---	---	30	A
$I_{SM}$	Pulsed Source Current		---	---	60	A
$V_{SD}$	Diode Forward Voltage	$V_{GS}=0V, I_S=1A, T_J=25^\circ\text{C}$	---	---	1	V
$t_{rr}$	Reverse Recovery Time <sup>3</sup>	$V_{GS}=0V, I_S=5A$ ,	---	99	---	ns
$Q_{rr}$	Reverse Recovery Charge <sup>3</sup>	$dI/dt=100A/\mu s, T_J=25^\circ\text{C}$	---	164	---	nC

Note :

1. Repetitive Rating : Pulsed width limited by maximum junction temperature.
2.  $V_{DD}=50V, L=0.1\text{mH}, I_{AS}=39A, R_G=25\Omega$ , Starting  $T_J=25^\circ\text{C}$ .
3. The data tested by pulsed, pulse width  $\leq 300\mu s$ , duty cycle  $\leq 2\%$ .
4. Essentially independent of operating temperature.

## 100V N-Channel MOSFETs

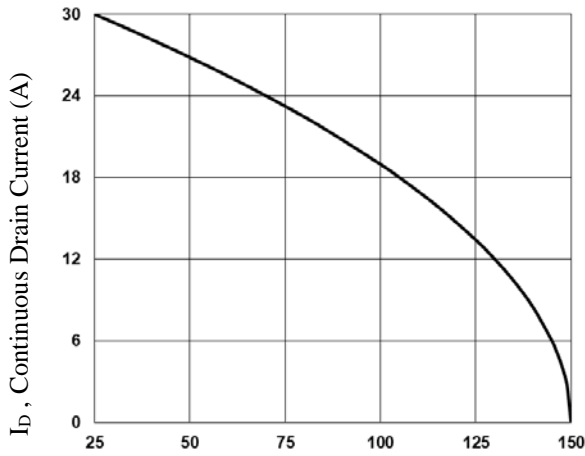


Fig.1 Continuous Drain Current vs.  $T_C$

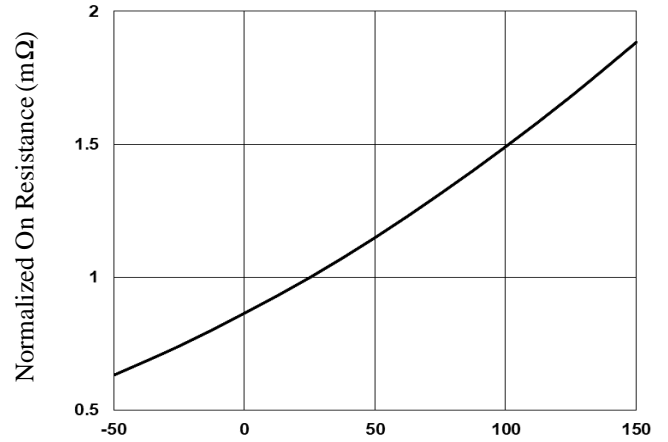


Fig.2 Normalized RDSON vs.  $T_J$

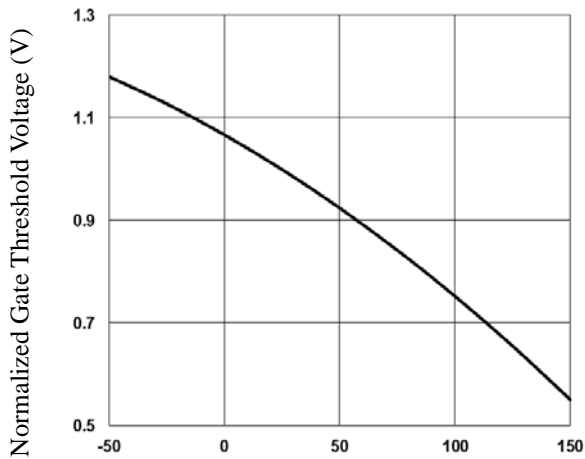


Fig.3 Normalized  $V_{th}$  vs.  $T_J$

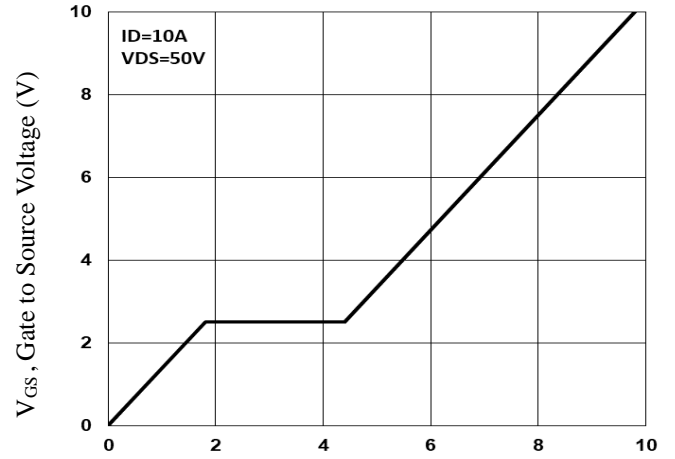


Fig.4 Gate Charge Characteristics

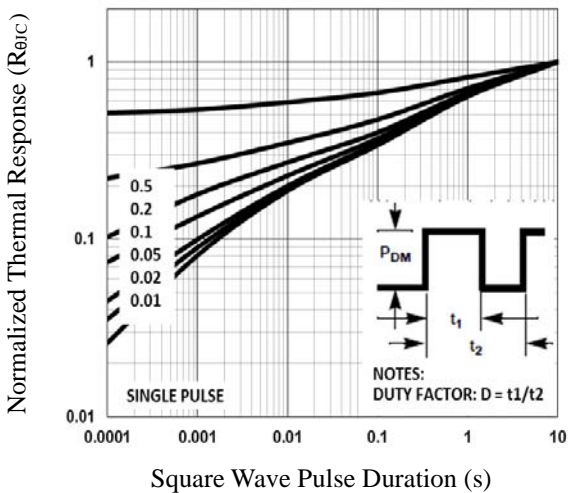


Fig.5 Normalized Transient Impedance

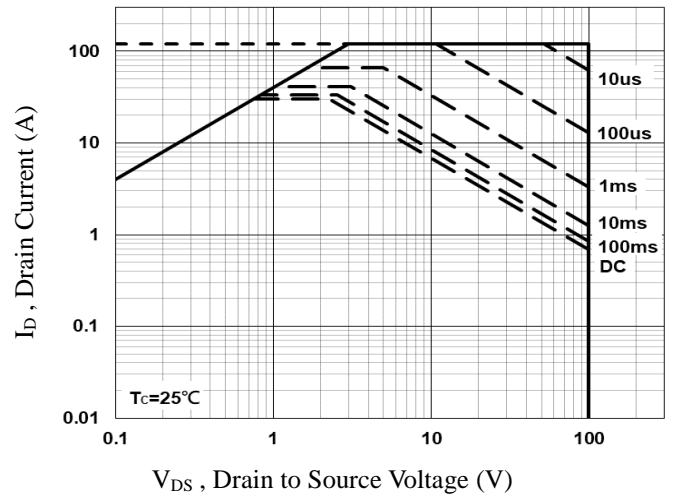


Fig.6 Maximum Safe Operation Area



# FTK0986DFN56

## 100V N-Channel MOSFETs

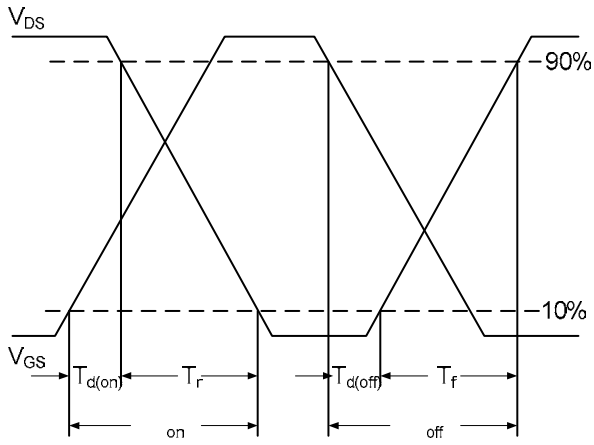


Fig.7 Switching Time Waveform

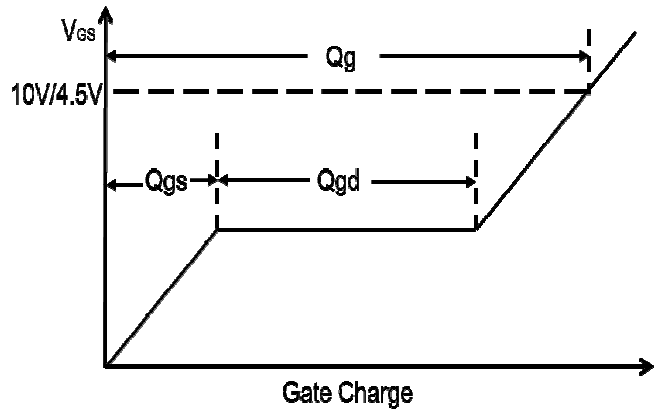
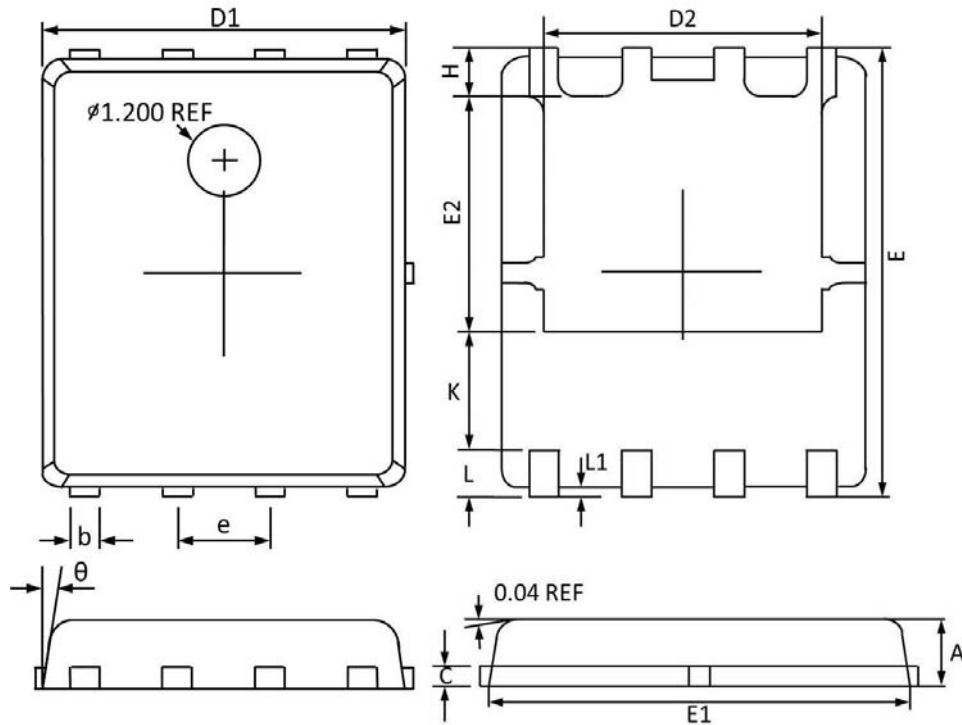


Fig.8 Gate Charge Waveform

## 100V N-Channel MOSFETs

### PPAK5x6 PACKAGE INFORMATION



Symbol	Dimensions In Millimeters		Dimensions In Inches	
	MAX	MIN	MAX	MIN
A	1.100	0.800	0.043	0.031
b	0.510	0.330	0.020	0.013
C	0.300	0.200	0.012	0.008
D1	5.100	4.800	0.201	0.189
D2	4.100	3.610	0.161	0.142
E	6.200	5.900	0.244	0.232
E1	5.900	5.700	0.232	0.224
E2	3.780	3.350	0.149	0.132
e	1.27BSC		0.05BSC	
H	0.700	0.410	0.028	0.016
K	1.500	1.100	0.059	0.043
L	0.710	0.510	0.028	0.020
L1	0.200	0.060	0.008	0.002
$\theta$	12°	0°	12°	0°