

## -100V P-Channel MOSFETs

### General Description

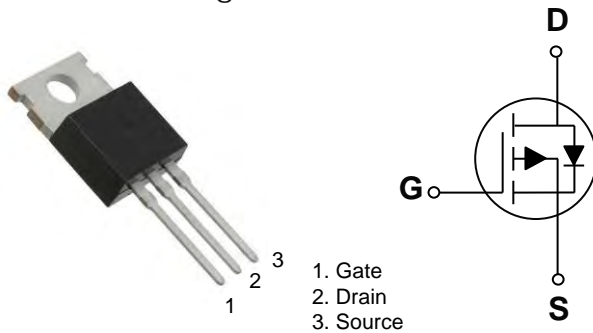
These P-Channel enhancement mode power field effect transistors are using trench DMOS technology. This advanced technology has been especially tailored to minimize on-state resistance, provide superior switching performance, and withstand high energy pulse in the avalanche and commutation mode. These devices are well suited for high efficiency fast switching applications.

BVDSS	RDS(ON)	ID
-100V	95mΩ	-24A

### Features

- -100V, -25A,  $R_{DS(ON)} = 95m\Omega @ V_{GS} = -10V$
- Improved  $dv/dt$  capability
- Fast switching
- 100% EAS Guaranteed
- Green Device Available

### TO-220 Pin Configuration



### Applications

- Networking
- Load Switch
- LED applications

### Absolute Maximum Ratings ( $T_C=25^\circ\text{C}$ unless otherwise noted)

Symbol	Parameter	Rating	Units
$V_{DS}$	Drain-Source Voltage	-100	V
$V_{GS}$	Gate-Source Voltage	$\pm 25$	V
$I_D$	Drain Current – Continuous ( $T_C=25^\circ\text{C}$ )	-24	A
	Drain Current – Continuous ( $T_C=100^\circ\text{C}$ )	-15.1	A
$I_{DM}$	Drain Current – Pulsed <sup>1</sup>	-96	A
$P_D$	Power Dissipation ( $T_C=25^\circ\text{C}$ )	125	W
	Power Dissipation – Derate above $25^\circ\text{C}$	1	W/ $^\circ\text{C}$
$T_{STG}$	Storage Temperature Range	-50 to 150	$^\circ\text{C}$
$T_J$	Operating Junction Temperature Range	-50 to 150	$^\circ\text{C}$

### Thermal Characteristics

Symbol	Parameter	Typ.	Max.	Unit
$R_{\theta JA}$	Thermal Resistance Junction to ambient	---	62	$^\circ\text{C}/\text{W}$
$R_{\theta JC}$	Thermal Resistance Junction to Case	---	1.0	$^\circ\text{C}/\text{W}$

## -100V P-Channel MOSFETs

Electrical Characteristics ( $T_J=25\text{ }^\circ\text{C}$ , unless otherwise noted)

### Off Characteristics

Symbol	Parameter	Conditions	Min.	Typ.	Max.	Unit
$BV_{DSS}$	Drain-Source Breakdown Voltage	$V_{GS}=0V, I_D=-250\mu A$	-100	---	---	V
$\Delta BV_{DSS}/\Delta T_J$	$BV_{DSS}$ Temperature Coefficient	Reference to $25\text{ }^\circ\text{C}$ , $I_D=-1mA$	---	0.06	---	V/ $^\circ\text{C}$
$I_{DSS}$	Drain-Source Leakage Current	$V_{DS}=-100V, V_{GS}=0V, T_J=25\text{ }^\circ\text{C}$	---	---	-1	$\mu A$
		$V_{DS}=-80V, V_{GS}=0V, T_J=125\text{ }^\circ\text{C}$	---	---	-10	$\mu A$
$I_{GSS}$	Gate-Source Leakage Current	$V_{GS}=\pm 25V, V_{DS}=0V$	---	---	$\pm 100$	nA

### On Characteristics

$R_{DS(ON)}$	Static Drain-Source On-Resistance	$V_{GS}=-10V, I_D=-6A$	---	75	95	m $\Omega$
		$V_{GS}=-4.5V, I_D=-3A$	---	80	110	m $\Omega$
$V_{GS(th)}$	Gate Threshold Voltage	$V_{GS}=V_{DS}, I_D=-250\mu A$	-1.2	-1.6	-2.2	V
$\Delta V_{GS(th)}$	$V_{GS(th)}$ Temperature Coefficient		---	-4.46	---	mV/ $^\circ\text{C}$

### Dynamic and switching Characteristics

$Q_g$	Total Gate Charge <sup>2,3</sup>	$V_{DS}=-50V, V_{GS}=-10V, I_D=-5A$	---	40.4	70	nC
$Q_{gs}$	Gate-Source Charge <sup>2,3</sup>		---	7.7	15	
$Q_{gd}$	Gate-Drain Charge <sup>2,3</sup>		---	6.6	13	
$T_{d(on)}$	Turn-On Delay Time <sup>2,3</sup>	$V_{DD}=-30V, V_{GS}=-10V, R_G=6\Omega$ $I_D=-1A$	---	27	54	ns
$T_r$	Rise Time <sup>2,3</sup>		---	12	24	
$T_{d(off)}$	Turn-Off Delay Time <sup>2,3</sup>		---	150	300	
$T_f$	Fall Time <sup>2,3</sup>		---	45	90	
$C_{iss}$	Input Capacitance	$V_{DS}=-30V, V_{GS}=0V, F=1MHz$	---	2250	3900	pF
$C_{oss}$	Output Capacitance		---	130	250	
$C_{rss}$	Reverse Transfer Capacitance		---	90	180	
$R_g$	Gate resistance	$V_{GS}=0V, V_{DS}=0V, F=1MHz$	---	10		$\Omega$

### Drain-Source Diode Characteristics and Maximum Ratings

Symbol	Parameter	Conditions	Min.	Typ.	Max.	Unit
$I_S$	Continuous Source Current	$V_G=V_D=0V$ , Force Current	---	---	-24	A
$I_{SM}$	Pulsed Source Current		---	---	-48	A
$V_{SD}$	Diode Forward Voltage	$V_{GS}=0V, I_S=-1A, T_J=25\text{ }^\circ\text{C}$	---	---	-1.2	V
$t_{rr}$	Reverse Recovery Time <sup>2</sup>	$I_S=-1A, di/dt=100A/\mu s, T_J=25\text{ }^\circ\text{C}$	---	---	---	ns
$Q_{rr}$	Reverse Recovery Charge <sup>2</sup>		---	---	---	nC

Note :

1. Repetitive Rating : Pulsed width limited by maximum junction temperature.
2. The data tested by pulsed, pulse width  $\leq 300\mu s$ , duty cycle  $\leq 2\%$ .
3. Essentially independent of operating temperature.

## -100V P-Channel MOSFETs

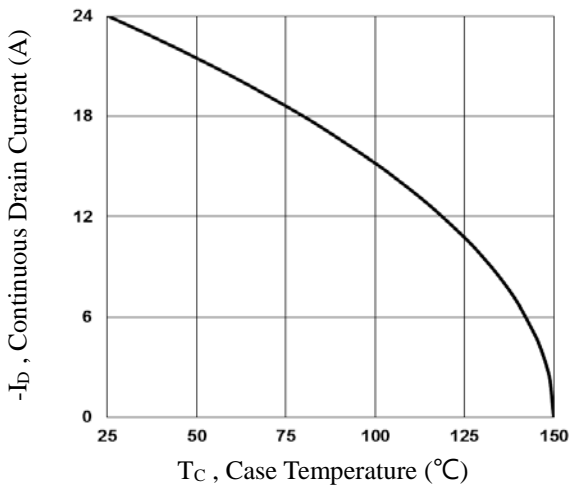


Fig.1 Continuous Drain Current vs.  $T_c$

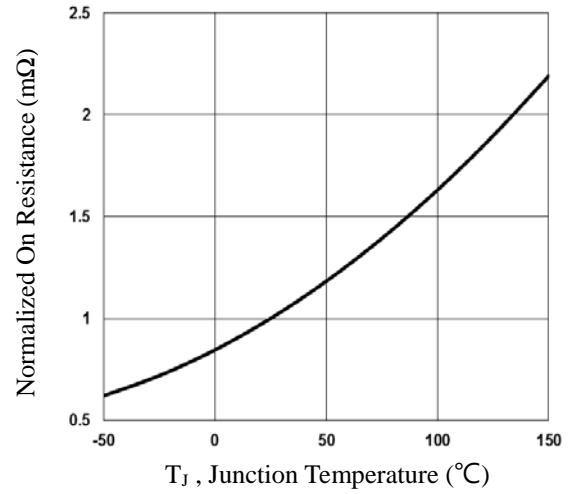


Fig.2 Normalized  $R_{DS(on)}$  vs.  $T_j$

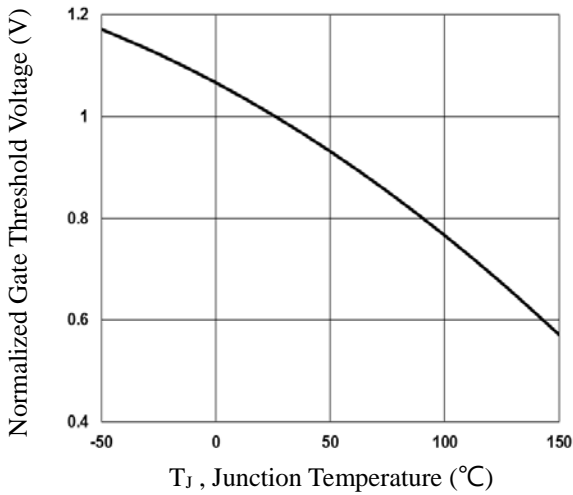


Fig.3 Normalized  $V_{th}$  vs.  $T_j$

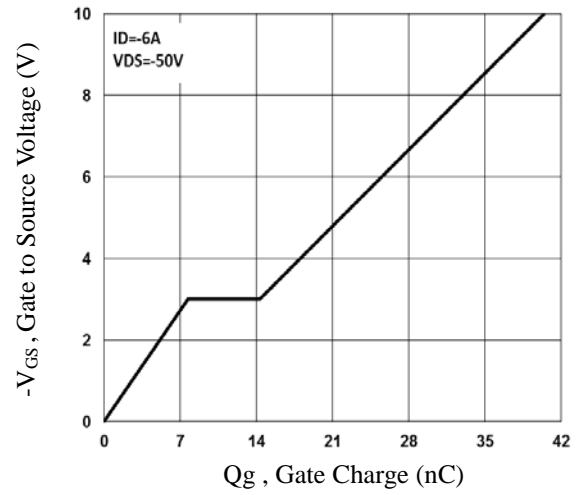


Fig.4 Gate Charge Waveform

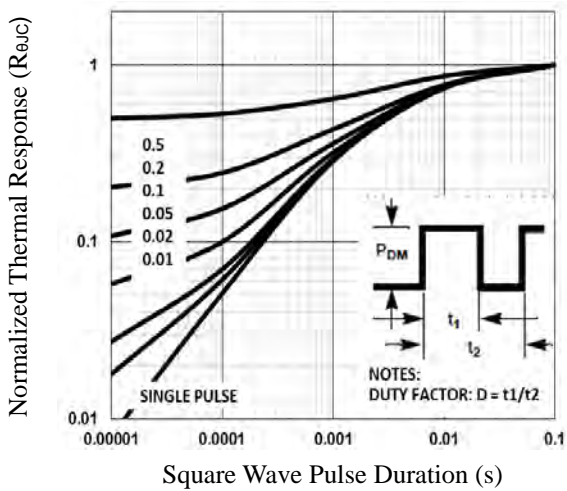


Fig.5 Normalized Transient Impedance

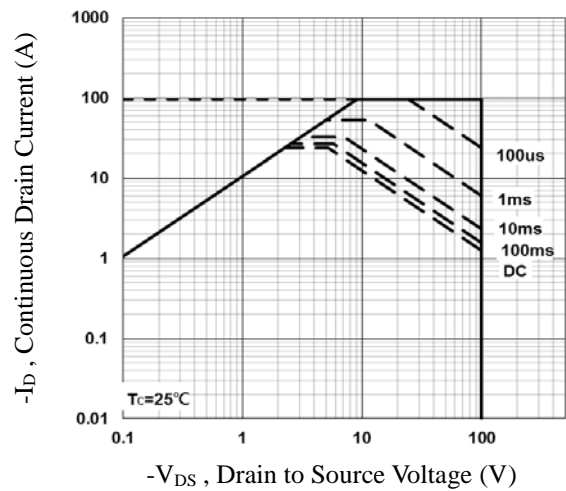


Fig.6 Maximum Safe Operation Area

## -100V P-Channel MOSFETs

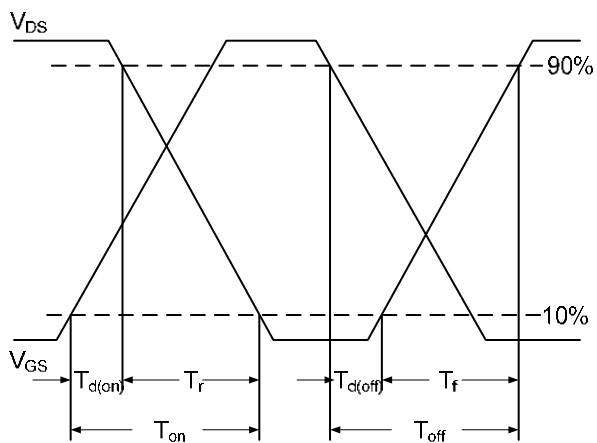


Fig.7 Switching Time Waveform

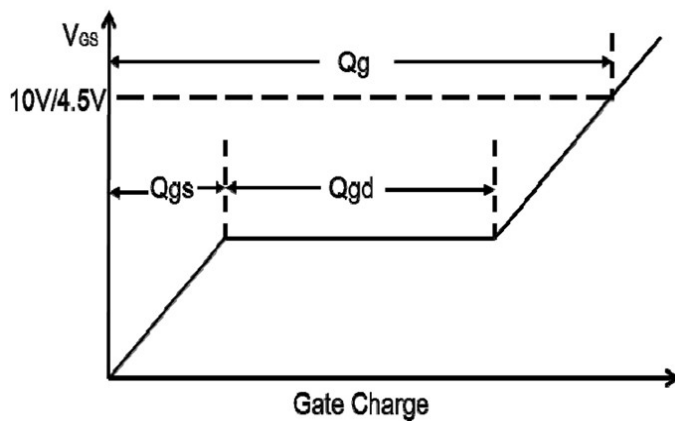
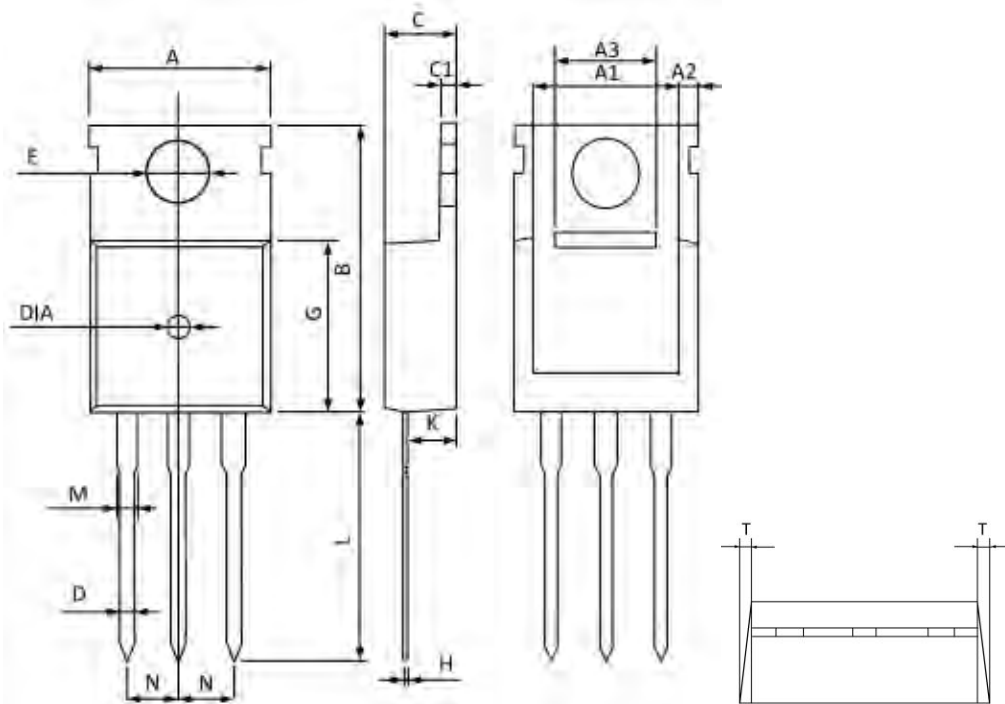


Fig.8 Gate Charge Waveform

## -100V P-Channel MOSFETs

### TO-220 PACKAGE INFORMATION



Symbol	Dimensions In Millimeters		Dimensions In Inches	
	MAX	MIN	MAX	MIN
A	10.300	9.700	0.406	0.382
A1	8.840	8.440	0.348	0.332
A2	1.250	1.050	0.049	0.041
A3	5.300	5.100	0.209	0.201
B	16.200	15.400	0.638	0.606
C	4.680	4.280	0.184	0.169
C1	1.500	1.100	0.059	0.043
D	1.000	0.600	0.039	0.024
E	3.800	3.400	0.150	0.134
G	9.300	8.700	0.366	0.343
H	0.600	0.400	0.024	0.016
K	2.700	2.100	0.106	0.083
L	13.600	12.800	0.535	0.504
M	1.500	1.100	0.059	0.043
N	2.590	2.490	0.102	0.098
T	W0.35		W0.014	
DIA	Φ1.5 TYP.	deep0.2 TYP.	Φ0.059 TYP.	deep0.008 TYP.