

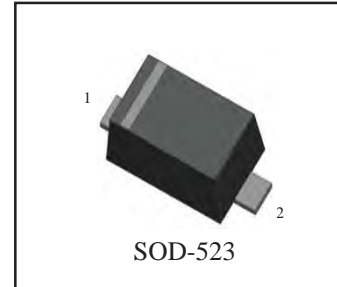
Small Signal Schottky Diode

Features

- Low $I_R = 0.1 \mu A$.
- High reliability.
- Small surface mounting.

Applications

- Low current rectification



Ordering Information

Device	Marking	Package Code
RB520S-30	B	SOD-523

MAXIMUM RATINGS ($T_a = 25^\circ C$ unless otherwise noted)

Symbol	Parameter	Limit	Unit
V_R	DC Reverse Voltage	30	V
I_o	Mean rectifying Current	200	mA
I_{FSM}	Peak Forward Surge Current	1	A
P_T	Total Device Dissipation	200	mW
$R_{\theta JA}$	Thermal Resistance Junction to Ambient	635	$^\circ C/W$
T_j	Junction Temperature	-55 ~ +125	$^\circ C$
T_{stg}	Storage Temperature	-55 ~ +150	$^\circ C$

ELECTRICAL CHARACTERISTICS ($T_a = 25^\circ C$ unless otherwise specified)

Parameter	Symbol	Test Condition	Min	Typ	Max	Unit
Reverse current	I_R	$V_R = 10V$			1	μA
Forward voltage	V_F	$I_F = 200mA$			0.6	V

● Electrical characteristic curves (Ta = 25°C)

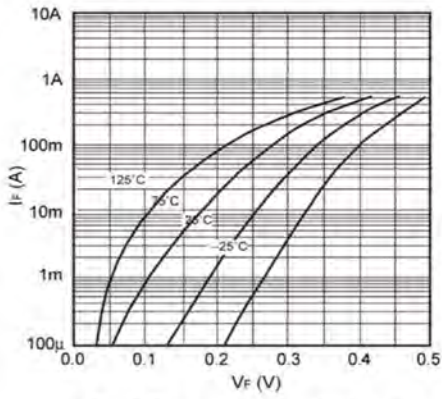


Fig.1 Forward characteristics

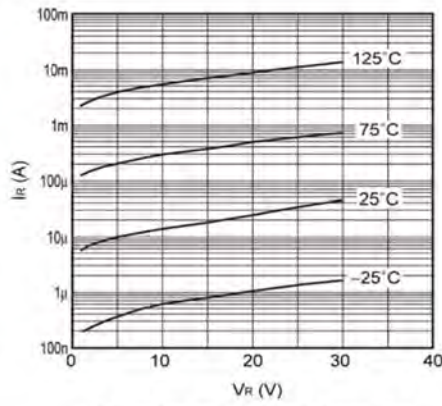


Fig.2 Reverse characteristics

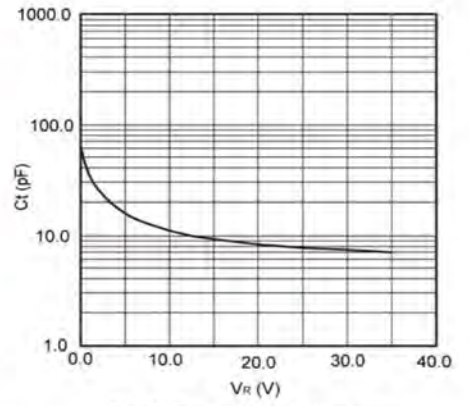


Fig.3 Capacitance between terminals characteristics

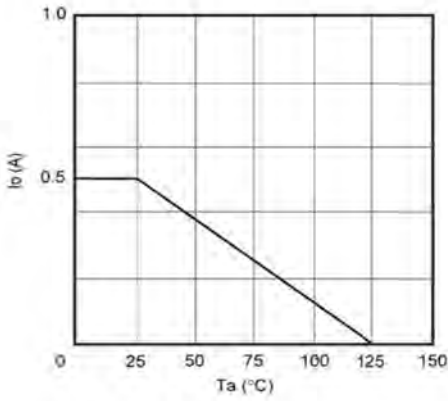
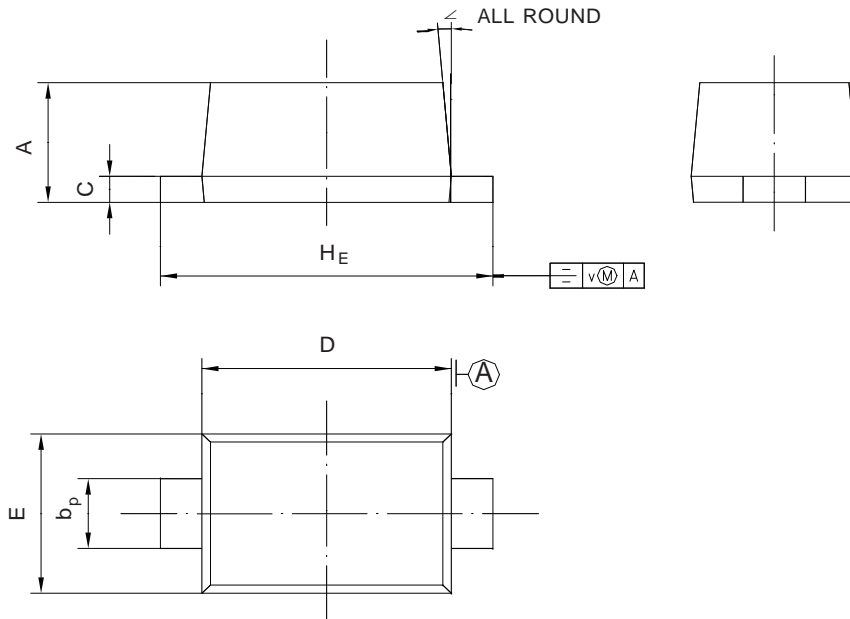


Fig.4 Derating curve

PACKAGE OUTLINE

Plastic surface mounted package; 2 leads



UNIT	A	b _p	C	D	E	H _E	V	∠
mm	0.70 0.60	0.4 0.3	0.135 0.100	1.25 1.15	0.85 0.75	1.7 1.5	0.1	5°

SOD-523