

# Schottky Rectifier

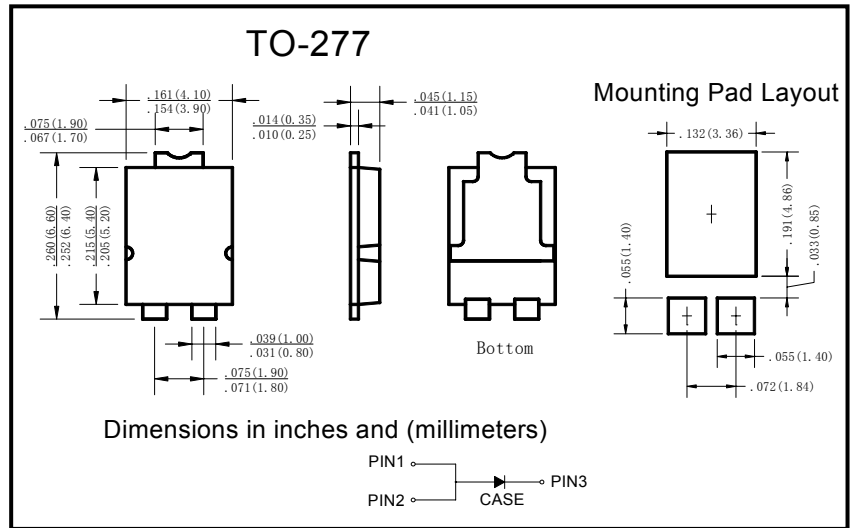
## ■ Features

- High surge Forward current capability
- Low Power loss, High efficiency
- IF (AV) 10A
- VRRM 60V

## ■ Applications

- Switching Power Supply Industry
- Photovoltaic Solar cell Protection Schottky Rectifier

## ■ Outline Dimensions and Mark



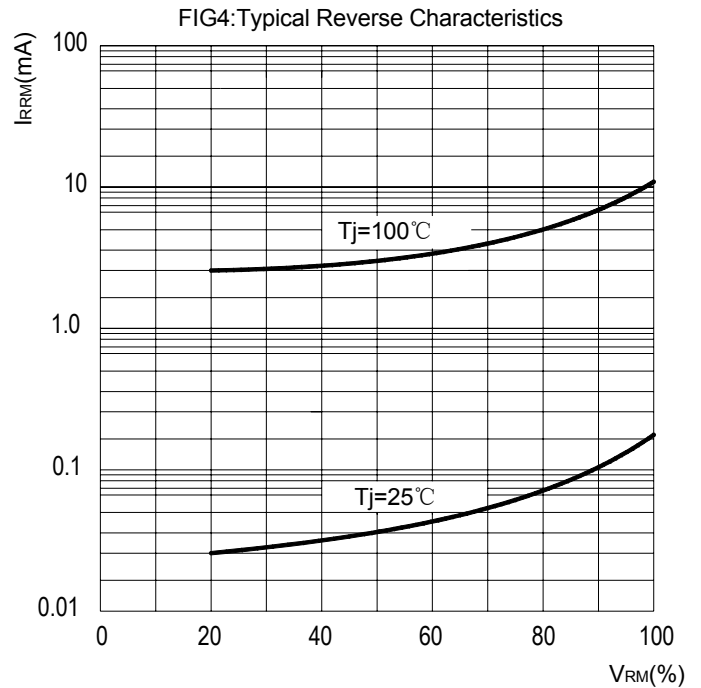
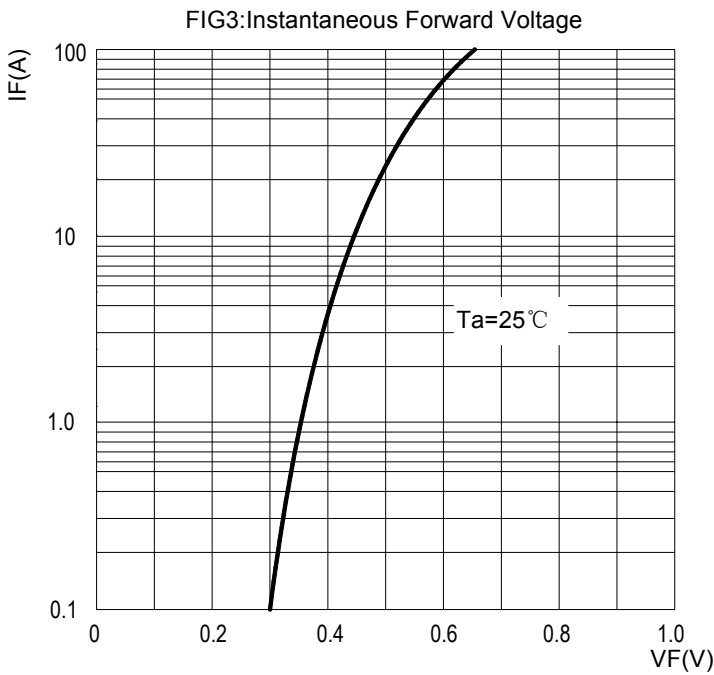
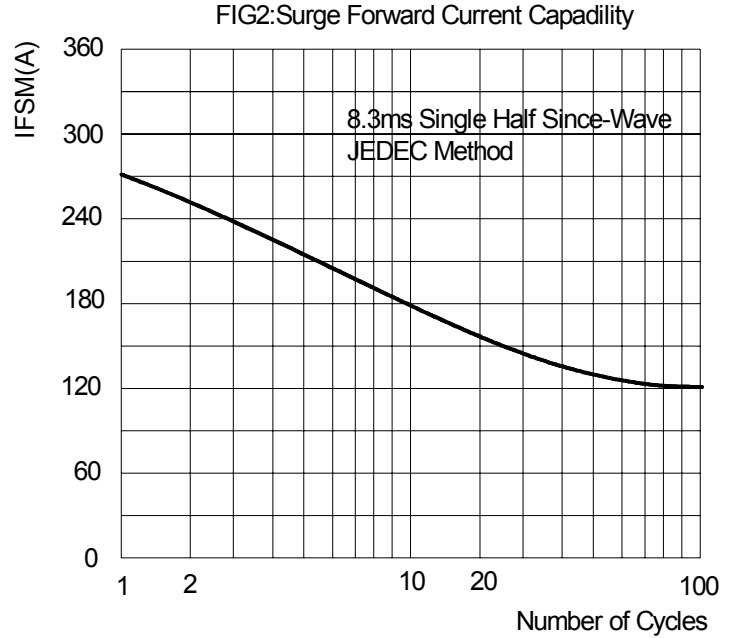
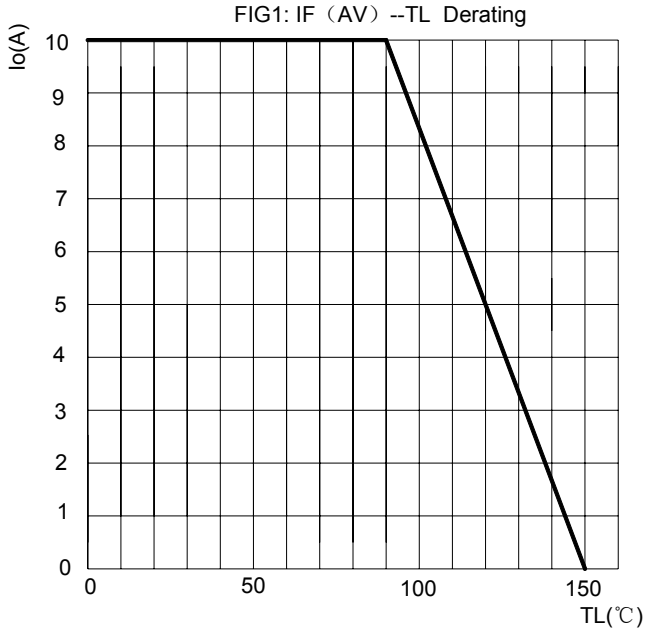
## ■ Limiting Values (Absolute Maximum Rating)

Item	Symbol	Unit	Conditions	SS10U60
Repetitive Peak Reverse Voltage	VRRM	V		60
Average Rectified Output Current	I <sub>o</sub>	A	60HZ sine wave, R- load, T <sub>a</sub> =25°C	10
Surge(Non-repetitive)Forward Current	I <sub>FSM</sub>	A	60HZ sine wave, 1 cycle, T <sub>a</sub> =25°C	275
Current Squared Time	I <sup>2</sup> t	A <sup>2</sup> s	1ms ≤ t < 8.3ms T <sub>j</sub> =25°C	313
Storage Temperature	T <sub>stg</sub>	°C		-55 ~ +150
Junction Temperature	T <sub>j</sub>	°C		-55~+150
Thermal Resistance(Typical)	R <sub>θJ-C</sub>	°CW	Between Junction and Case	8

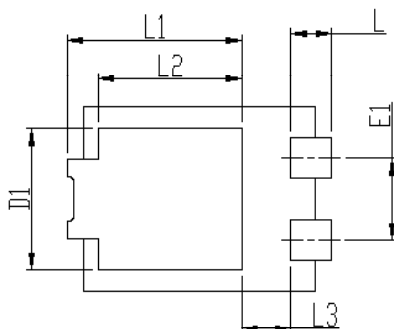
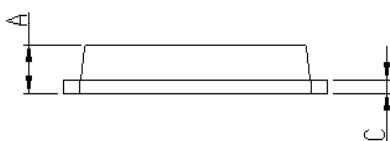
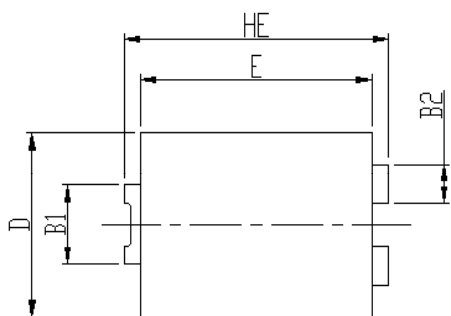
## ■ Electrical Characteristics (T<sub>a</sub>=25°C Unless otherwise specified)

Item	Symbol	Unit	Test Condition	Min	Typ	Max
Peak Forward Voltage	V <sub>FM</sub>	V	I <sub>FM</sub> = 10.0A, T <sub>j</sub> = 25°C	-	0.46	0.50
			I <sub>FM</sub> = 10.0A, T <sub>j</sub> = 125°C	-	0.42	0.46
Reverse Breakdown Voltage	V <sub>BR</sub>	V	I <sub>R</sub> = 0.5mA	60	-	-
Leakage Current	I <sub>R</sub>	mA	V <sub>R</sub> = 50V, T <sub>j</sub> = 25°C	-	-	0.5
			V <sub>R</sub> = 50V, T <sub>j</sub> = 125°C	-	-	100

Rating and Characteristic Curves

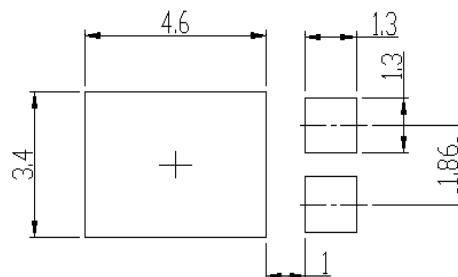


## PACKAGE OUTLINE DIMENSIONS



DIM	Unit: mm		Unit: inch	
	MIN	MAX	MIN	MAX
HE	6.4	6.6	0.252	0.260
E	5.6	5.8	0.220	0.228
D	4.1	4.3	0.161	0.169
B1	1.7	1.9	0.067	0.075
B2	0.8	1	0.031	0.039
A	1.05	1.2	0.041	0.047
C	0.3	0.4	0.012	0.016
L	0.85	1.1	0.033	0.043
L1	4.2	4.4	0.165	0.173
L2	3.52 Typ.		0.139 Typ.	
L3	1.1	1.4	0.043	0.055
D1	3	3.3	0.118	0.130
E1	1.86 Typ.		0.073 Typ.	

Soldering footprint



## PACKING INFORMATION

### Packing quantities:

5000 pcs/Reel, 12mm Tape, 13" Reel